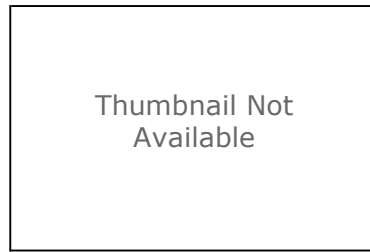


Monitoramento Velocidade Superior 3nós

Shapefile



Tags

Monitoramento, Velocidade, Nós

Summary

There is no summary for this item.

Description

Pontos de monitoramento de embarcações registrados com velocidade superior a 3 nós

Credits

GDS/GDSO/TGO - Petrobras

Use limitations

There are no access and use limitations for this item.

Extent

West -48.639730 **East** -40.673333
North -22.768470 **South** -27.860667

Scale Range

Maximum (zoomed in) 1:5,000
Minimum (zoomed out) 1:150,000,000

ArcGIS Metadata ►

Topics and Keywords ►

THEMES OR CATEGORIES OF THE RESOURCE **location**

* CONTENT TYPE **Downloadable Data**

EXPORT TO FGDC CSDGM XML FORMAT AS RESOURCE DESCRIPTION **No**

Hide Topics and Keywords ▲

Citation ►

TITLE **Monitoramento Velocidade Superior 3nós**

PRESENTATION FORMATS * **digital map**

Hide Citation ▲

Resource Details ►

DATASET LANGUAGES * **Portuguese (BRAZIL)**

DATASET CHARACTER SET **utf8 - 8 bit UCS Transfer Format**

SPATIAL REPRESENTATION TYPE * **vector**

* **PROCESSING ENVIRONMENT** Microsoft Windows 7 Version 6.1 (Build 7601) Service Pack 1; Esri ArcGIS 10.1.1.3143

CREDITS

GDS/GDSO/TGO - Petrobras

ARCGIS ITEM PROPERTIES

* **NAME** PETROBRAS_02022_000409_2014_15_BS_2015_10_22_PT_BS_VS3
 * **SIZE** 64.463
 * **LOCATION** file:///\\sbcfs07\igeo_es001474\l1vq\solicitacoes\bs\ibama\PMTE_2014\SHAPES_METADADOS_DICIONARIO\PETROBRAS_02022_000409_2014_15_BS_2015_10_22_PT_BS_VS3.shp
 * **ACCESS PROTOCOL** Local Area Network

[Hide Resource Details ▲](#)

Extents ►

EXTENT

GEOGRAPHIC EXTENT

BOUNDING RECTANGLE

EXTENT TYPE Extent used for searching

* **WEST LONGITUDE** -48.639730
 * **EAST LONGITUDE** -40.673333
 * **NORTH LATITUDE** -22.768470
 * **SOUTH LATITUDE** -27.860667
 * **EXTENT CONTAINS THE RESOURCE** Yes

EXTENT IN THE ITEM'S COORDINATE SYSTEM

* **WEST LONGITUDE** -48.639730
 * **EAST LONGITUDE** -40.673333
 * **SOUTH LATITUDE** -27.860667
 * **NORTH LATITUDE** -22.768470
 * **EXTENT CONTAINS THE RESOURCE** Yes

[Hide Extents ▲](#)

Resource Points of Contact ►

POINT OF CONTACT

INDIVIDUAL'S NAME Tiago Medici Vinha
ORGANIZATION'S NAME GDSO/TGO/GDS - Petrobras
CONTACT'S ROLE originator

[Hide Resource Points of Contact ▲](#)

Resource Maintenance ►

RESOURCE MAINTENANCE

UPDATE FREQUENCY as needed

[Hide Resource Maintenance ▲](#)

Spatial Reference ►

ARCGIS COORDINATE SYSTEM

* **TYPE** Geographic
 * **GEOGRAPHIC COORDINATE REFERENCE** GCS_WGS_1984
 * **COORDINATE REFERENCE DETAILS**
GEOGRAPHIC COORDINATE SYSTEM
WELL-KNOWN IDENTIFIER 4326
X ORIGIN -400
Y ORIGIN -400
XY SCALE 11258999068426.238
Z ORIGIN -100000
Z SCALE 10000

M ORIGIN -100000
 M SCALE 10000
 XY TOLERANCE 8.983152841195215e-009
 Z TOLERANCE 0.001
 M TOLERANCE 0.001
 HIGH PRECISION true
 LEFT LONGITUDE -180
 LATEST WELL-KNOWN IDENTIFIER 4326
 WELL-KNOWN TEXT GEOGCS["GCS_WGS_1984",DATUM["D_WGS_1984",SPHEROID
 ["WGS_1984",6378137.0,298.257223563]],PRIMEM["Greenwich",0.0],UNIT
 ["Degree",0.0174532925199433],AUTHORITY["EPSG",4326]]

REFERENCE SYSTEM IDENTIFIER

* VALUE 4326
 * CODESPACE EPSG
 * VERSION 7.11.2

[Hide Spatial Reference ▲](#)

Spatial Data Properties ►

VECTOR ►

* LEVEL OF TOPOLOGY FOR THIS DATASET geometry only

GEOMETRIC OBJECTS

FEATURE CLASS NAME PETROBRAS_02022_000409_2014_15_BS_2015_10_22_PT_BS_VS3
 * OBJECT TYPE point
 * OBJECT COUNT 2558379

[Hide Vector ▲](#)

ARCGIS FEATURE CLASS PROPERTIES ►

FEATURE CLASS NAME PETROBRAS_02022_000409_2014_15_BS_2015_10_22_PT_BS_VS3
 * FEATURE TYPE Simple
 * GEOMETRY TYPE Point
 * HAS TOPOLOGY FALSE
 * FEATURE COUNT 2558379
 * SPATIAL INDEX FALSE
 * LINEAR REFERENCING FALSE

[Hide ArcGIS Feature Class Properties ▲](#)

[Hide Spatial Data Properties ▲](#)

Data Quality ►

SCOPE OF QUALITY INFORMATION ►

RESOURCE LEVEL feature

[Hide Scope of quality information ▲](#)

[Hide Data Quality ▲](#)

Lineage ►

LINEAGE STATEMENT

Arquivo original em escala nacional, feito o recorte para a BS. Ponto originados pelo monitoramento de móveis com dados a cada 20 minutos no banco de dados. O registro traz a informação de velocidade em nós.

Para esse arquivo foram feitas queries de dados, extraindo somente dados de velocidade acima de 3 nós.

[Hide Lineage ▲](#)

Geoprocessing history ►

PROCESS

PROCESS NAME

DATE 2015-07-30 15:26:33

TOOL LOCATION c:\program files (x86)\arcgis\desktop10.2\ArcToolbox\Toolboxes\Data Management Tools.tbx\CalculateField

COMMAND ISSUED

```
CalculateField EMB_14_BS_VS3 ordem_tx "mid( [POSI_TX_DATAHORA], 7,4) & mid
([POSI_TX_DATAHORA],4,2) & left( [POSI_TX_DATAHORA],2) & mid( [POSI_TX_DATAHORA],12,2) &
mid( [POSI_TX_DATAHORA],15,2) & right( [POSI_TX_DATAHORA],2)" VB #
```

INCLUDE IN LINEAGE WHEN EXPORTING METADATA No

PROCESS

PROCESS NAME

DATE 2015-07-30 15:29:15

TOOL LOCATION c:\program files (x86)\arcgis\desktop10.2\ArcToolbox\Toolboxes\Data Management Tools.tbx\CalculateField

COMMAND ISSUED

```
CalculateField EMB_14_BS_VS3 EMB_DT "[MOVE_TX_NOME] &"_ & left( [POSI_TX_DATAHORA],10)" VB
#
```

INCLUDE IN LINEAGE WHEN EXPORTING METADATA No

PROCESS

PROCESS NAME

DATE 2015-07-30 15:39:37

TOOL LOCATION c:\program files (x86)\arcgis\desktop10.2\ArcToolbox\Toolboxes\Data Management Tools.tbx\CalculateField

COMMAND ISSUED

```
CalculateField EMB_14_BS_VS3 emb_dt "[MOVE_TX_NOME] &"_ & left( [POSI_TX_DATAHORA],10)" VB
#
```

INCLUDE IN LINEAGE WHEN EXPORTING METADATA No

PROCESS

PROCESS NAME

DATE 2015-10-23 12:52:29

TOOL LOCATION c:\program files (x86)\arcgis\desktop10.1\ArcToolbox\Toolboxes\Conversion Tools.tbx\FeatureClassToFeatureClass

COMMAND ISSUED

```
FeatureClassToFeatureClass R:\PMTE_2014\EMB_14.gdb\EMB_14_BS_VS3 R:\PMTE_2014
\SHAPES\METADADOS_DICIONARIO PETROBRAS_02022_000409_2014_15_BS_2015_10_22_PT_BS_VS3.shp #
"MOVE_CD_ID "MOVE_CD_ID" true true false 4 Long 0 0 ,First,#,R:\PMTE_2014
\EMB_14.gdb\EMB_14_BS_VS3,MOVE_CD_ID,-1,-1;MOVE_TX_NO "MOVE_TX_NOME" true true false 50
Text 0 0 ,First,#,R:\PMTE_2014\EMB_14.gdb\EMB_14_BS_VS3,MOVE_TX_NOME,-1,-1;EMBA_TX_TI
"EMBA_TX_TIPO" true true false 50 Text 0 0 ,First,#,R:\PMTE_2014
\EMB_14.gdb\EMB_14_BS_VS3,EMBA_TX_TIPO,-1,-1;EMBA_TX_1 "EMBA_TX_TIPO_GERAL" true true
false 50 Text 0 0 ,First,#,R:\PMTE_2014\EMB_14.gdb\EMB_14_BS_VS3,EMBA_TX_TIPO_GERAL,-1,-
1;EMBA_TX_PR "EMBA_TX_PROPRIETARIO" true true false 50 Text 0 0 ,First,#,R:\PMTE_2014
\EMB_14.gdb\EMB_14_BS_VS3,EMBA_TX_PROPRIETARIO,-1,-1;EMBA_TX_OP "EMBA_TX_OPERACAO_TIPO"
true true false 50 Text 0 0 ,First,#,R:\PMTE_2014
\EMB_14.gdb\EMB_14_BS_VS3,EMBA_TX_OPERACAO_TIPO,-1,-1;EMBA_TX_GE "EMBA_TX_GERENCIA" true
true false 50 Text 0 0 ,First,#,R:\PMTE_2014\EMB_14.gdb\EMB_14_BS_VS3,EMBA_TX_GERENCIA,-1,-
1;EMBA_TX_2 "EMBA_TX_GERENCIA_GERAL" true true false 50 Text 0 0 ,First,#,R:\PMTE_2014
\EMB_14.gdb\EMB_14_BS_VS3,EMBA_TX_GERENCIA_GERAL,-1,-1;EMBA_TX_BA "EMBA_TX_BANDEIRA" true
true false 50 Text 0 0 ,First,#,R:\PMTE_2014\EMB_14.gdb\EMB_14_BS_VS3,EMBA_TX_BANDEIRA,-1,-
1;POSI_DT_DA "POSI_DT_DATAHORA" true true false 8 Date 0 0 ,First,#,R:\PMTE_2014
\EMB_14.gdb\EMB_14_BS_VS3,POSI_DT_DATAHORA,-1,-1;POSI_NR_LO "POSI_NR_LONGITUDE" true true
false 8 Double 0 0 ,First,#,R:\PMTE_2014\EMB_14.gdb\EMB_14_BS_VS3,POSI_NR_LONGITUDE,-1,-
1;POSI_NR_LA "POSI_NR_LATITUDE" true true false 8 Double 0 0 ,First,#,R:\PMTE_2014
\EMB_14.gdb\EMB_14_BS_VS3,POSI_NR_LATITUDE,-1,-1;POSI_NR_VE "POSI_NR_VELOCIDADE" true true
false 8 Double 0 0 ,First,#,R:\PMTE_2014\EMB_14.gdb\EMB_14_BS_VS3,POSI_NR_VELOCIDADE,-1,-
1;POSI_NR_RU "POSI_NR_RUMO" true true false 8 Double 0 0 ,First,#,R:\PMTE_2014
\EMB_14.gdb\EMB_14_BS_VS3,POSI_NR_RUMO,-1,-1;POSI_TX_DA "POSI_TX_DATAHORA" true true false
19 Text 0 0 ,First,#,R:\PMTE_2014\EMB_14.gdb\EMB_14_BS_VS3,POSI_TX_DATAHORA,-1,-1;ordem_tx
"ordem_tx" true true false 50 Text 0 0 ,First,#,R:\PMTE_2014
\EMB_14.gdb\EMB_14_BS_VS3,ordem_tx,-1,-1;emb_dt "emb_dt" true true false 255 Text 0
0 ,First,#,R:\PMTE_2014\EMB_14.gdb\EMB_14_BS_VS3,emb_dt,-1,-1" #
```

INCLUDE IN LINEAGE WHEN EXPORTING METADATA No

[Hide Geoprocessing history ▲](#)

Distribution ►

DISTRIBUTION FORMAT

* NAME Shapefile

TRANSFER OPTIONS

* TRANSFER SIZE 64.463

[Hide Distribution ▲](#)

Fields ►

DETAILS FOR OBJECT PETROBRAS_02022_000409_2014_15_BS_2015_10_22_PT_BS_VS3 ►

* TYPE Feature Class

* ROW COUNT 2558379

DEFINITION

Shape

DEFINITION SOURCE

Shape

FIELD FID ►

* ALIAS FID

* DATA TYPE OID

* WIDTH 4

* PRECISION 0

* SCALE 0

* FIELD DESCRIPTION

Internal feature number.

* DESCRIPTION SOURCE

Esri

* DESCRIPTION OF VALUES Sequential unique whole numbers that are automatically generated.

[Hide Field FID ▲](#)

FIELD Shape ►

* ALIAS Shape

* DATA TYPE Geometry

* WIDTH 0

* PRECISION 0

* SCALE 0

* FIELD DESCRIPTION

Feature geometry.

* DESCRIPTION SOURCE

Esri

* DESCRIPTION OF VALUES Coordinates defining the features.

[Hide Field Shape ▲](#)

FIELD MOVE_CD_ID ►

ALIAS Número identificador

* DATA TYPE Integer

* WIDTH 9

* PRECISION 9

* SCALE 0

FIELD DESCRIPTION

Número identificador

DESCRIPTION SOURCE

Número

[Hide Field MOVE_CD_ID ▲](#)

FIELD MOVE_TX_NO ►

ALIAS Nome da embarcação

* DATA TYPE String

* WIDTH 50

* PRECISION 0

* SCALE 0

FIELD DESCRIPTION

Nome da embarcação no banco de dados

DESCRIPTION SOURCE

Nome

[Hide Field MOVE_TX_NO ▲](#)

FIELD EMBA_TX_TI ►

ALIAS Tipo de embarcação

* DATA TYPE String

* WIDTH 50

* PRECISION 0

* SCALE 0

FIELD DESCRIPTION

Tipo geral de embarcação

DESCRIPTION SOURCE

Tipo

[Hide Field EMBA_TX_TI ▲](#)

FIELD EMBA_TX__1 ►

ALIAS Tipo de embarcação

* DATA TYPE String

* WIDTH 50

* PRECISION 0

* SCALE 0

FIELD DESCRIPTION

Tipo de embarcação

DESCRIPTION SOURCE

Tipo

[Hide Field EMBA_TX__1 ▲](#)

FIELD EMBA_TX_PR ►

ALIAS Proprietário da Embarcação

* DATA TYPE String

* WIDTH 50

* PRECISION 0

* SCALE 0

FIELD DESCRIPTION

Nome do Proprietário da Embarcação

DESCRIPTION SOURCE

Nome

[Hide Field EMBA_TX_PR ▲](#)

FIELD EMBA_TX_OP ►

ALIAS Operação
* DATA TYPE String
* WIDTH 50
* PRECISION 0
* SCALE 0

FIELD DESCRIPTION
Operação

DESCRIPTION SOURCE
Operação

[Hide Field EMBA_TX_OP ▲](#)

FIELD EMBA_TX_GE ►

ALIAS Subgerência responsável
* DATA TYPE String
* WIDTH 50
* PRECISION 0
* SCALE 0

FIELD DESCRIPTION
Subgerência responsável pelo barco

DESCRIPTION SOURCE
Gerencia

[Hide Field EMBA_TX_GE ▲](#)

FIELD EMBA_TX__2 ►

* ALIAS EMBA_TX__2
* DATA TYPE String
* WIDTH 50
* PRECISION 0
* SCALE 0

[Hide Field EMBA_TX__2 ▲](#)

FIELD EMBA_TX_BA ►

ALIAS Origem do barco
* DATA TYPE String
* WIDTH 50
* PRECISION 0
* SCALE 0

FIELD DESCRIPTION
País de origem do barco

DESCRIPTION SOURCE
país

[Hide Field EMBA_TX_BA ▲](#)

FIELD POSI_DT_DA ►

ALIAS Data da posição
* DATA TYPE Date
* WIDTH 8
* PRECISION 0
* SCALE 0

FIELD DESCRIPTION
Data da posição do registro

DESCRIPTION SOURCE
Data

[Hide Field POSI_DT_DA ▲](#)

FIELD [POSI_NR_LO ▶](#)

* ALIAS POSI_NR_LO
* DATA TYPE Double
* WIDTH 19
* PRECISION 0
* SCALE 0

[Hide Field POSI_NR_LO ▲](#)

FIELD [POSI_NR_LA ▶](#)

ALIAS Longitude
* DATA TYPE Double
* WIDTH 19
* PRECISION 0
* SCALE 0

FIELD DESCRIPTION
Longitude

DESCRIPTION SOURCE
Longitude

[Hide Field POSI_NR_LA ▲](#)

FIELD [POSI_NR_VE ▶](#)

ALIAS Velocidade
* DATA TYPE Double
* WIDTH 19
* PRECISION 0
* SCALE 0

FIELD DESCRIPTION
Velocidade da embarcação

DESCRIPTION SOURCE
Latitude

[Hide Field POSI_NR_VE ▲](#)

FIELD [POSI_NR_RU ▶](#)

ALIAS Rumo da embarcação
* DATA TYPE Double
* WIDTH 19
* PRECISION 0
* SCALE 0

FIELD DESCRIPTION
Rumo da embarcação no momento do ponto

DESCRIPTION SOURCE
Rumo

[Hide Field POSI_NR_RU ▲](#)

FIELD [POSI_TX_DA ▶](#)

ALIAS Data
* DATA TYPE String
* WIDTH 19
* PRECISION 0
* SCALE 0

FIELD DESCRIPTION
Data do ponto

DESCRIPTION SOURCE
Data

[Hide Field POSI_TX_DA ▲](#)

FIELD **ordem_tx** ►

ALIAS ordem de pontos/data

* DATA TYPE String

* WIDTH 50

* PRECISION 0

* SCALE 0

FIELD DESCRIPTION

ordem de pontos/data

DESCRIPTION SOURCE

ordem de pontos/data

[Hide Field ordem_tx ▲](#)

FIELD **emb_dt** ►

ALIAS Nome data

* DATA TYPE String

* WIDTH 254

* PRECISION 0

* SCALE 0

FIELD DESCRIPTION

Nome da embarcação e data

DESCRIPTION SOURCE

Nome data

[Hide Field emb_dt ▲](#)

[Hide Details for object PETROBRAS_02022_000409_2014_15_BS_2015_10_22_PT_BS_VS3 ▲](#)

[Hide Fields ▲](#)

Metadata Details ►

* METADATA LANGUAGE Portuguese (BRAZIL)

METADATA CHARACTER SET utf8 - 8 bit UCS Transfer Format

METADATA IDENTIFIER Monitoramento

SCOPE OF THE DATA DESCRIBED BY THE METADATA * dataset

SCOPE NAME * dataset

* LAST UPDATE 2015-10-27

ARCGIS METADATA PROPERTIES

METADATA FORMAT ArcGIS 1.0

STANDARD OR PROFILE USED TO EDIT METADATA ISO19139

CREATED IN ARCGIS FOR THE ITEM 2015-07-30 15:26:33

LAST MODIFIED IN ARCGIS FOR THE ITEM 2015-10-27 18:34:51

AUTOMATIC UPDATES

HAVE BEEN PERFORMED Yes

LAST UPDATE 2015-10-27 18:34:51

[Hide Metadata Details ▲](#)

Metadata Maintenance ►

MAINTENANCE

UPDATE FREQUENCY as needed

Hide Metadata Maintenance ▲

FGDC Metadata (read-only) ▼