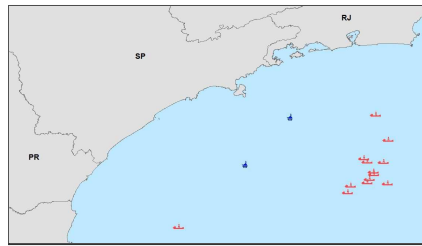


UNIDADES MARÍTIMAS FIXAS

Shapefile



Tags

UNIDADE, MARÍTIMA, PLATAFORMA FPSO, JAQUETA

Summary

Unidades Marítimas fixas (FPSO e JAQUETA) na Bacia de Santos

Description

Localização das Unidades Marítimas fixas no ano de 2015. Ocorreram deslocamento ao longo do ano devido a mudança de posição para a operação

Credits

PETROBRAS E&P-SERV/US-OPSUB/GDSO/TGO

Use limitations

There are no access and use limitations for this item.

Extent

West -46.528688 **East** -42.440704
North -24.298398 **South** -26.474821

Scale Range

Maximum (zoomed in) 1:5,000
Minimum (zoomed out) 1:150,000,000

ArcGIS Metadata ►

Topics and Keywords ►

THEMES OR CATEGORIES OF THE RESOURCE location

* CONTENT TYPE Downloadable Data

EXPORT TO FGDC CSDGM XML FORMAT AS RESOURCE DESCRIPTION No

Hide Topics and Keywords ▲

Citation ►

TITLE UNIDADES MARÍTIMAS FIXAS

PRESENTATION FORMATS * digital map

Hide Citation ▲

Resource Details ►

DATASET LANGUAGES * English (UNITED STATES)

SPATIAL REPRESENTATION TYPE * vector

* PROCESSING ENVIRONMENT Microsoft Windows 7 Version 6.1 (Build 7601) Service Pack 1; Esri ArcGIS 10.3.0.4322

CREDITS

PETROBRAS E&P-SERV/US-OPSUB/GDSO/TGO

ARCGIS ITEM PROPERTIES

* NAME

PETROBRAS_02022_000409_2014_15_BSant_PETROBRAS_2016_06_14_Unidades_Fixas

* SIZE 0.000

* LOCATION file:///\\dragon.uo-

bs.petrobras.com.br\bs_gis_sms\$\GIS_SMS_RESERVADO\2.OSGeo\OSGeo_2016

\016_20160218_PMT_2015_dados_brutos\3.Entregaveis\Shapefiles_20160614

\PETROBRAS_02022_000409_2014_15_BSant_PETROBRAS_2016_06_14_Unidades_Fixas.shp

* ACCESS PROTOCOL Local Area Network

[Hide Resource Details ▲](#)

Extents ►

EXTENT

GEOGRAPHIC EXTENT

BOUNDING RECTANGLE

EXTENT TYPE Extent used for searching

* WEST LONGITUDE -46.528688

* EAST LONGITUDE -42.440704

* NORTH LATITUDE -24.298398

* SOUTH LATITUDE -26.474821

* EXTENT CONTAINS THE RESOURCE Yes

EXTENT IN THE ITEM'S COORDINATE SYSTEM

* WEST LONGITUDE 347610.973800

* EAST LONGITUDE 755192.029000

* SOUTH LATITUDE 7071731.002300

* NORTH LATITUDE 7310431.003700

* EXTENT CONTAINS THE RESOURCE Yes

[Hide Extents ▲](#)

Spatial Reference ►

ARCGIS COORDINATE SYSTEM

* TYPE Projected

* GEOGRAPHIC COORDINATE REFERENCE GCS_WGS_1984

* PROJECTION WGS_1984_UTM_Zone_23S

* COORDINATE REFERENCE DETAILS

PROJECTED COORDINATE SYSTEM

WELL-KNOWN IDENTIFIER 32723

X ORIGIN -5120900

Y ORIGIN 1900

XY SCALE 450445547.3910538

Z ORIGIN -100000

Z SCALE 10000

M ORIGIN -100000

M SCALE 10000

XY TOLERANCE 0.001

Z TOLERANCE 0.001
 M TOLERANCE 0.001
 HIGH PRECISION true
 LATEST WELL-KNOWN IDENTIFIER 32723
 WELL-KNOWN TEXT PROJCS["WGS_1984_UTM_Zone_23S",GEOGCS
 ["GCS_WGS_1984",DATUM["D_WGS_1984",SPHEROID
 ["WGS_1984",6378137.0,298.257223563]],PRIMEM["Greenwich",0.0],UNIT
 ["Degree",0.0174532925199433]],PROJECTION["Transverse_Mercator"],PARAMETER
 ["False_Easting",500000.0],PARAMETER["False_Northing",1000000.0],PARAMETER
 ["Central_Meridian",-45.0],PARAMETER["Scale_Factor",0.9996],PARAMETER
 ["Latitude_Of_Origin",0.0],UNIT["Meter",1.0],AUTHORITY["EPSG",32723]]

REFERENCE SYSTEM IDENTIFIER

* VALUE 32723
 * CODESPACE EPSG
 * VERSION 8.2.6

[Hide Spatial Reference ▲](#)

Spatial Data Properties ►

VECTOR ►

* LEVEL OF TOPOLOGY FOR THIS DATASET geometry only

GEOMETRIC OBJECTS

FEATURE CLASS NAME

PETROBRAS_02022_000409_2014_15_BSant_PETROBRAS_2016_06_14_Unidades_Fixas

* OBJECT TYPE point
 * OBJECT COUNT 15

[Hide Vector ▲](#)

ARCGIS FEATURE CLASS PROPERTIES ►

FEATURE CLASS NAME

PETROBRAS_02022_000409_2014_15_BSant_PETROBRAS_2016_06_14_Unidades_Fixas

* FEATURE TYPE Simple
 * GEOMETRY TYPE Point
 * HAS TOPOLOGY FALSE
 * FEATURE COUNT 15
 * SPATIAL INDEX FALSE
 * LINEAR REFERENCING FALSE

[Hide ArcGIS Feature Class Properties ▲](#)

[Hide Spatial Data Properties ▲](#)

Distribution ►

DISTRIBUTION FORMAT

* NAME Shapefile

TRANSFER OPTIONS

* TRANSFER SIZE 0.000

[Hide Distribution ▲](#)

Fields ►

DETAILS FOR

OBJECT PETROBRAS_02022_000409_2014_15_BSant_PETROBRAS_2016_06_14_Unidades_Fixas



- * TYPE Feature Class
- * ROW COUNT 15

FIELD FID ►

- * ALIAS FID
- * DATA TYPE OID
- * WIDTH 4
- * PRECISION 0
- * SCALE 0
- * FIELD DESCRIPTION
Internal feature number.
- * DESCRIPTION SOURCE
Esri
- * DESCRIPTION OF VALUES
Sequential unique whole numbers that are automatically generated.

Hide Field FID ▲

FIELD SHAPE ►

- * ALIAS Shape
- * DATA TYPE Geometry
- * WIDTH 0
- * PRECISION 0
- * SCALE 0
- * FIELD DESCRIPTION
Feature geometry.
- * DESCRIPTION SOURCE
Esri
- * DESCRIPTION OF VALUES
Coordinates defining the features.

Hide Field SHAPE ▲

FIELD LICE_NM_PR ►

- * ALIAS LICE_NM_PR
- * DATA TYPE String
- * WIDTH 113
- * PRECISION 0
- * SCALE 0

Hide Field LICE_NM_PR ▲

FIELD LICE_NM_EM ►

- * ALIAS LICE_NM_EM
- * DATA TYPE String
- * WIDTH 115
- * PRECISION 0
- * SCALE 0

Hide Field LICE_NM_EM ▲

FIELD LICE_SG_EM ►
* ALIAS LICE_SG_EM
* DATA TYPE String
* WIDTH 23
* PRECISION 0
* SCALE 0

Hide Field LICE_SG_EM ▲

FIELD LICE_SG_UP ►
* ALIAS LICE_SG_UP
* DATA TYPE String
* WIDTH 11
* PRECISION 0
* SCALE 0

Hide Field LICE_SG_UP ▲

FIELD LICE_DT_IN ►
* ALIAS LICE_DT_IN
* DATA TYPE Date
* WIDTH 8
* PRECISION 0
* SCALE 0

Hide Field LICE_DT_IN ▲

FIELD LICE_DT_FI ►
* ALIAS LICE_DT_FI
* DATA TYPE Date
* WIDTH 8
* PRECISION 0
* SCALE 0

Hide Field LICE_DT_FI ▲

FIELD LICE_DT__1 ►
* ALIAS LICE_DT__1
* DATA TYPE Date
* WIDTH 8
* PRECISION 0
* SCALE 0

Hide Field LICE_DT__1 ▲

FIELD LICE_DT__2 ►
* ALIAS LICE_DT__2
* DATA TYPE Date
* WIDTH 8
* PRECISION 0
* SCALE 0

Hide Field LICE_DT__2 ▲

FIELD LICE_NR_CO ►
* ALIAS LICE_NR_CO
* DATA TYPE Double
* WIDTH 19

* PRECISION 0
* SCALE 0

[Hide Field LICE_NR_CO ▲](#)

FIELD LICE_NR__1 ►

* ALIAS LICE_NR__1
* DATA TYPE Double
* WIDTH 19
* PRECISION 0
* SCALE 0

[Hide Field LICE_NR__1 ▲](#)

FIELD TIPO ►

* ALIAS TIPO
* DATA TYPE String
* WIDTH 50
* PRECISION 0
* SCALE 0

[Hide Field TIPO ▲](#)

[Hide Details for
object PETROBRAS_02022_000409_2014_15_BSant_PETROBRAS_2016_06_14_Unidades_Fixas ▲](#)

[Hide Fields ▲](#)

Metadata Details ►

* METADATA LANGUAGE English (UNITED STATES)
* METADATA CHARACTER SET utf8 - 8 bit UCS Transfer Format

SCOPE OF THE DATA DESCRIBED BY THE METADATA * dataset

SCOPE NAME * dataset

* LAST UPDATE 2016-06-15

ARCGIS METADATA PROPERTIES

METADATA FORMAT ArcGIS 1.0

METADATA STYLE ISO 19139 Metadata Implementation Specification

STANDARD OR PROFILE USED TO EDIT METADATA FGDC

CREATED IN ARCGIS FOR THE ITEM 2016-06-03 13:45:21

LAST MODIFIED IN ARCGIS FOR THE ITEM 2016-06-15 10:10:19

AUTOMATIC UPDATES

HAVE BEEN PERFORMED Yes

LAST UPDATE 2016-06-15 10:10:19

[Hide Metadata Details ▲](#)

Metadata Contacts ►

METADATA CONTACT

INDIVIDUAL'S NAME Equipe de Geoprocessamento da UO-BS

ORGANIZATION'S NAME PETROBRAS

CONTACT'S ROLE point of contact

CONTACT INFORMATION ►

ADDRESS

TYPE

DELIVERY POINT Rua Marquês de Herval, 90, EDISA

CITY Santos

ADMINISTRATIVE AREA SP

E-MAIL ADDRESS GDSBS@petrobras.com.br

Hide Contact information ▲

Hide Metadata Contacts ▲

Thumbnail and Enclosures ►

THUMBNAIL

THUMBNAIL TYPE JPG

Hide Thumbnail and Enclosures ▲

FGDC Metadata (read-only) ▼