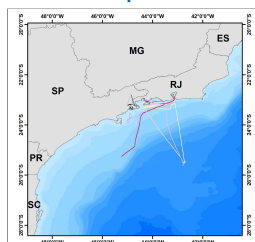


## PETROBRAS\_02022\_000409\_2014\_15\_BSant\_PETROBRAS\_2016\_06\_14\_Origem\_Destino\_Sepetiba

### Shapefile



### Tags

TRÁFEGO; EMBARCAÇÕES; PORTOS; SEPETIBA;

### Summary

TRAÇADOS DOS TRAJETOS ENTRE PORTOS VIA SEPETIBA

### Description

Embarcações de apoio as operações na Baía de Santos no ano de 2015, mostrando o trajeto que fizeram em determinadas datas entre os portos do Rio de Janeiro/Niterói e Angra dos Reis

### Credits

PETROBRAS E&P-SERV/US-OPSUB/GDSO/GDS

### Use limitations

There are no access and use limitations for this item.

### Extent

**West** -45.239700 **East** -42.684300  
**North** -22.844414 **South** -25.622650

### Scale Range

**Maximum (zoomed in)** 1:5,000  
**Minimum (zoomed out)** 1:150,000,000

### ArcGIS Metadata ►

#### Topics and Keywords ►

\* CONTENT TYPE Downloadable Data

[Hide Topics and Keywords ▲](#)

#### Citation ►

\* TITLE PETROBRAS\_02022\_000409\_2014\_15\_BSant\_PETROBRAS\_2016\_06\_14\_Origem\_Destino\_Sepetiba

PRESENTATION FORMATS \* digital map

[Hide Citation ▲](#)

#### Resource Details ►

DATASET LANGUAGES \* Portuguese (BRAZIL)

SPATIAL REPRESENTATION TYPE \* vector

\* PROCESSING ENVIRONMENT Microsoft Windows 7 Version 6.1 (Build 7601) Service Pack 1; Esri ArcGIS 10.4.0.5524

#### CREDITS

PETROBRAS E&P-SERV/US-OPSUB/GDSO/GDS

#### ARCGIS ITEM PROPERTIES

\* NAME PETROBRAS\_02022\_000409\_2014\_15\_BSant\_PETROBRAS\_2016\_06\_14\_Origem\_Destino\_Sepetiba

\* SIZE 0.076

\* LOCATION file:///\\dragon\bs\_gis\_sms\$\\GIS\_SMS\_RESERVADO\\2.OSGeo\\OSGeo\_2017\\007\_20170113\_PMTE2016\\3.Entregaveis\\Banco\_dados\_PMTE\_2016\\SHAPEFILE\\PETROBRAS\_02022\_000409\_2014\_15\_BSant\_PETROBRAS\_2016\_06\_14\_Origem\_Destino\_Sepetiba.shp

\* ACCESS PROTOCOL Local Area Network

[Hide Resource Details ▲](#)

#### Extents ►

##### EXTENT

##### VERTICAL EXTENT

\* MINIMUM VALUE 0.000000  
 \* MAXIMUM VALUE 0.000000

##### EXTENT

##### GEOGRAPHIC EXTENT

##### BOUNDING RECTANGLE

EXTENT TYPE Extent used for searching

\* WEST LONGITUDE -45.239700  
 \* EAST LONGITUDE -42.684300  
 \* NORTH LATITUDE -22.844414  
 \* SOUTH LATITUDE -25.622650  
 \* EXTENT CONTAINS THE RESOURCE Yes

##### EXTENT IN THE ITEM'S COORDINATE SYSTEM

\* WEST LONGITUDE -45.239700

\* EAST LONGITUDE -42.684300  
 \* SOUTH LATITUDE -25.622650  
 \* NORTH LATITUDE -22.844414  
 \* EXTENT CONTAINS THE RESOURCE Yes

[Hide Extents ▲](#)

## Spatial Reference ►

### ARCGIS COORDINATE SYSTEM

\* TYPE **Geographic**  
 \* GEOGRAPHIC COORDINATE REFERENCE GCS\_WGS\_1984  
 \* COORDINATE REFERENCE DETAILS  
 GEOGRAPHIC COORDINATE SYSTEM  
 WELL-KNOWN IDENTIFIER 4326  
 X ORIGIN -400  
 Y ORIGIN -400  
 XY SCALE 11258999068426.238  
 Z ORIGIN -100000  
 Z SCALE 10000  
 M ORIGIN -100000  
 M SCALE 10000  
 XY TOLERANCE 8.983152841195215e-009  
 Z TOLERANCE 0.001  
 M TOLERANCE 0.001  
 HIGH PRECISION true  
 LEFT LONGITUDE -180  
 LATEST WELL-KNOWN IDENTIFIER 4326  
 WELL-KNOWN TEXT GEOGCS["GCS\_WGS\_1984",DATUM["D\_WGS\_1984",SPHEROID["WGS\_1984",6378137.0,298.257223563]],PRIMEM  
 ["Greenwich",0.0],UNIT["Degree",0.0174532925199433],AUTHORITY["EPSG",4326]]

### REFERENCE SYSTEM IDENTIFIER

\* VALUE 4326  
 \* CODESPACE EPSG  
 \* VERSION 6.14(3.0.1)

[Hide Spatial Reference ▲](#)

## Spatial Data Properties ►

### VECTOR ►

\* LEVEL OF TOPOLOGY FOR THIS DATASET geometry only

### GEOMETRIC OBJECTS

FEATURE CLASS NAME PETROBRAS\_02022\_000409\_2014\_15\_BSant\_PETROBRAS\_2016\_06\_14\_Origem\_Destino\_Sepetiba  
 \* OBJECT TYPE composite  
 \* OBJECT COUNT 20

[Hide Vector ▲](#)

### ARCGIS FEATURE CLASS PROPERTIES ►

FEATURE CLASS NAME PETROBRAS\_02022\_000409\_2014\_15\_BSant\_PETROBRAS\_2016\_06\_14\_Origem\_Destino\_Sepetiba  
 \* FEATURE TYPE Simple  
 \* GEOMETRY TYPE Polyline  
 \* HAS TOPOLOGY FALSE  
 \* FEATURE COUNT 20  
 \* SPATIAL INDEX TRUE  
 \* LINEAR REFERENCING TRUE

[Hide ArcGIS Feature Class Properties ▲](#)

[Hide Spatial Data Properties ▲](#)

## Distribution ►

### DISTRIBUTION FORMAT

\* NAME Shapefile

### TRANSFER OPTIONS

\* TRANSFER SIZE 0.076

[Hide Distribution ▲](#)

## Fields ►

### DETAILS FOR OBJECT PETROBRAS\_02022\_000409\_2014\_15\_BSant\_PETROBRAS\_2016\_06\_14\_Origem\_Destino\_Sepetiba ►

\* TYPE **Feature Class**  
 \* ROW COUNT 20

### FIELD FID ►

\* ALIAS FID  
 \* DATA TYPE OID  
 \* WIDTH 4  
 \* PRECISION 0  
 \* SCALE 0  
 \* FIELD DESCRIPTION  
 Internal feature number.  
 \* DESCRIPTION SOURCE  
 Esri  
 \* DESCRIPTION OF VALUES  
 Sequential unique whole numbers that are automatically generated.

[Hide Field FID ▲](#)

### FIELD OBJECTID ►

\* ALIAS OBJECTID

\* DATA TYPE Integer  
 \* WIDTH 10  
 \* PRECISION 10  
 \* SCALE 0  
 \* FIELD DESCRIPTION  
 Internal feature number.  
  
 \* DESCRIPTION SOURCE  
 Esri  
  
 \* DESCRIPTION OF VALUES  
 Sequential unique whole numbers that are automatically generated.

[Hide Field OBJECTID ▲](#)

FIELD Shape ►  
 \* ALIAS Shape  
 \* DATA TYPE Geometry  
 \* WIDTH 0  
 \* PRECISION 0  
 \* SCALE 0  
 \* FIELD DESCRIPTION  
 Feature geometry.  
  
 \* DESCRIPTION SOURCE  
 Esri  
  
 \* DESCRIPTION OF VALUES  
 Coordinates defining the features.

[Hide Field Shape ▲](#)

FIELD POSI\_DT\_DA ►  
 \* ALIAS POSI\_DT\_DA  
 \* DATA TYPE Date  
 \* WIDTH 8  
 \* PRECISION 0  
 \* SCALE 0

[Hide Field POSI\\_DT\\_DA ▲](#)

FIELD MOVE\_TX\_NO ►  
 \* ALIAS MOVE\_TX\_NO  
 \* DATA TYPE String  
 \* WIDTH 50  
 \* PRECISION 0  
 \* SCALE 0

[Hide Field MOVE\\_TX\\_NO ▲](#)

FIELD EMBA\_TX\_TI ►  
 \* ALIAS EMBA\_TX\_TI  
 \* DATA TYPE String  
 \* WIDTH 50  
 \* PRECISION 0  
 \* SCALE 0

[Hide Field EMBA\\_TX\\_TI ▲](#)

FIELD EMBA\_TX\_GE ►  
 \* ALIAS EMBA\_TX\_GE  
 \* DATA TYPE String  
 \* WIDTH 50  
 \* PRECISION 0  
 \* SCALE 0

[Hide Field EMBA\\_TX\\_GE ▲](#)

[Hide Details for object PETROBRAS\\_02022\\_000409\\_2014\\_15\\_BSant\\_PETROBRAS\\_2016\\_06\\_14\\_Origem\\_Destino\\_Sepetiba ▲](#)

[Hide Fields ▲](#)

## Metadata Details ►

\* METADATA LANGUAGE Portuguese (BRAZIL)  
 \* METADATA CHARACTER SET utf8 - 8 bit UCS Transfer Format

SCOPE OF THE DATA DESCRIBED BY THE METADATA \* dataset  
 SCOPE NAME \* dataset

\* LAST UPDATE 2017-09-27

### ARCGIS METADATA PROPERTIES

METADATA FORMAT ArcGIS 1.0  
 METADATA STYLE FGDC CSDGM Metadata  
 STANDARD OR PROFILE USED TO EDIT METADATA FGDC

CREATED IN ARCGIS FOR THE ITEM 2017-09-15 12:59:03  
 LAST MODIFIED IN ARCGIS FOR THE ITEM 2017-09-27 13:56:43

### AUTOMATIC UPDATES

HAVE BEEN PERFORMED Yes  
 LAST UPDATE 2017-09-27 13:56:43

[Hide Metadata Details ▲](#)

**Thumbnail and Enclosures ►**

THUMBNAIL

THUMBNAIL TYPE    JPG

[Hide Thumbnail and Enclosures ▲](#)

**FGDC Metadata (read-only) ▼**