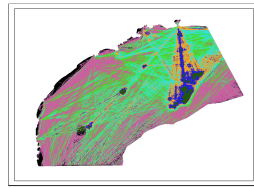


PETROBRAS_02022_000409_2014_15_Brasil_PETROBRAS_2017_01_15_PORCENT_DENSIDADE_NAV**Raster Dataset****Tags**

DENSIDADE; NAVEGAÇÃO; EMBARCAÇÕES; PETROBRAS; TERCEIROS; PMTE; PORCENTAGEM.

Summary

O Projeto de Monitoramento do Tráfego de Embarcações (PMTE) da Baía de Santos foi elaborado em atendimento à solicitação da CGPEG/IBAMA, emitida por meio da condicionante específica nº 2.10 da LP nº 0491/2014. A elaboração e o desenvolvimento do PMTE foram baseados nas orientações do parecer técnico PAR 02022.000409/2014-15 CGPEG/IBAMA, de 12 de setembro de 2014, e do parecer técnico PAR 02022.000548/2014-31 CGPEG/IBAMA, 19 de novembro de 2014, bem como nas informações contidas nas respectivas respostas dos pareceres supracitados, encaminhadas pela PETROBRAS ao IBAMA através da carta DE&P 0218/2014, de 13 de outubro de 2014, a qual também encaminhou o projeto atualmente aprovado, e da carta UOBS 0080/2015, de 12 de fevereiro de 2015.

Description

Porcentagem de navegação de embarcações PETROBRAS sob o total navegado na Baía de Santos.

Credits

PETROBRAS - SUB/OPSUB/GDSO/GDS

Use limitations

There are no access and use limitations for this item.

Extent

West -48.691272 **East** -40.468350
North -22.687152 **South** -27.901101

Scale Range

Maximum (zoomed in) 1:5,000
Minimum (zoomed out) 1:150,000,000

ArcGIS Metadata ►**Topics and Keywords ►**

* CONTENT TYPE Downloadable Data

Hide Topics and Keywords ▲

Citation ►

* TITLE PETROBRAS_02022_000409_2014_15_Brasil_PETROBRAS_2017_01_15_PORCENT_DENSIDADE_NAV_EMB_BRxTR.tif

PRESENTATION FORMATS * digital map

Hide Citation ▲

Resource Details ►

DATASET LANGUAGES * Portuguese (BRAZIL)

SPATIAL REPRESENTATION TYPE * grid

* PROCESSING ENVIRONMENT Microsoft Windows 7 Version 6.1 (Build 7601) Service Pack 1; Esri ArcGIS 10.4.0.5524

CREDITS

PETROBRAS - SUB/OPSUB/GDSO/GDS

ARC GIS ITEM PROPERTIES

* NAME PETROBRAS_02022_000409_2014_15_Brasil_PETROBRAS_2017_01_15_PORCENT_DENSIDADE_NAV_EMB_BRxTR.tif

* LOCATION file:///\\dragon\bs_gis_sms\$\\GIS_SMS_RESERVADO\\2.OSGeo\\OSGeo_2017\\007_20170113_PMTE2016\\3.Entregaveis\\Banco_dados_PMTE_2016\\RASTER\\PETROBRAS_02022_000409_2014_15_Brasil_PETROBRAS_2017_01_15_PORCENT_DENSIDADE_NAV_EMB_BRxTR.tif

* ACCESS PROTOCOL Local Area Network

Hide Resource Details ▲

Extents ►**EXTENT****GEOGRAPHIC EXTENT****BOUNDING RECTANGLE**

EXTENT TYPE Extent used for searching

* WEST LONGITUDE -48.691272

* EAST LONGITUDE -40.468350

* NORTH LATITUDE -22.687152

* SOUTH LATITUDE -27.901101

* EXTENT CONTAINS THE RESOURCE Yes

EXTENT IN THE ITEM'S COORDINATE SYSTEM

* WEST LONGITUDE -48.691272

* EAST LONGITUDE -40.468350

* SOUTH LATITUDE -27.901101

* NORTH LATITUDE -22.687152

* EXTENT CONTAINS THE RESOURCE Yes

[Hide Extents ▲](#)**Spatial Reference ►**

ARCGIS COORDINATE SYSTEM

* TYPE **Geographic**
 * GEOGRAPHIC COORDINATE REFERENCE GCS_SIRGAS_2000
 * COORDINATE REFERENCE DETAILS
 GEOGRAPHIC COORDINATE SYSTEM
 WELL-KNOWN IDENTIFIER 4674
 X ORIGIN -400
 Y ORIGIN -400
 XY SCALE 11258999068426.238
 Z ORIGIN -100000
 Z SCALE 10000
 M ORIGIN -100000
 M SCALE 10000
 XY TOLERANCE 8.9831528411952133e-009
 Z TOLERANCE 0.001
 M TOLERANCE 0.001
 HIGH PRECISION true
 LEFT LONGITUDE -180
 LATEST WELL-KNOWN IDENTIFIER 4674
 WELL-KNOWN TEXT GEOGCS["GCS_SIRGAS_2000",DATUM["D_SIRGAS_2000",SPHEROID["GRS_1980",6378137.0,298.257222101]],PRIMEM["Greenwich",0.0],UNIT["Degree",0.0174532925199433],AUTHORITY["EPSG",4674]]

REFERENCE SYSTEM IDENTIFIER

* VALUE **4674**
 * CODESPACE EPSG
 * VERSION 7.8.3(9.2.0)

[Hide Spatial Reference ▲](#)**Spatial Data Properties ►**

GEORECTIFIED GRID ►

* NUMBER OF DIMENSIONS 2

AXIS DIMENSIONS PROPERTIES

DIMENSION TYPE column (x-axis)
 * DIMENSION SIZE 1708
 * RESOLUTION 0.004814 deg (degree)

AXIS DIMENSIONS PROPERTIES

DIMENSION TYPE row (y-axis)
 * DIMENSION SIZE 1083
 * RESOLUTION 0.004814 deg (degree)

* CELL GEOMETRY area

* POINT IN PIXEL center

* TRANSFORMATION PARAMETERS ARE AVAILABLE Yes

* CHECK POINTS ARE AVAILABLE No

CORNER POINTS

* POINT -48.691272 -27.901101
 * POINT -48.691272 -22.687152
 * POINT -40.468350 -22.687152
 * POINT -40.468350 -27.901101

* CENTER POINT -44.579811 -25.294126

[Hide Georectified Grid ▲](#)

ARCGIS RASTER PROPERTIES ►

GENERAL INFORMATION

* PIXEL DEPTH 8
 * COMPRESSION TYPE LZW
 * NUMBER OF BANDS 1
 * RASTER FORMAT TIFF
 * SOURCE TYPE discrete
 * PIXEL TYPE signed integer
 * NO DATA VALUE 127
 * HAS COLORMAP No
 * HAS PYRAMIDS Yes

[Hide ArcGIS Raster Properties ▲](#)[Hide Spatial Data Properties ▲](#)**Spatial Data Content ►**

IMAGE DESCRIPTION

* TYPE OF INFORMATION thematic classification

BAND INFORMATION

* DESCRIPTION Band_1
 * MAXIMUM VALUE 6.000000
 * MINIMUM VALUE 1.000000
 * NUMBER OF BITS PER VALUE 8

[Hide Spatial Data Content ▲](#)**Geoprocessing history ►**

PROCESS

PROCESS NAME

DATE 2017-09-19 15:00:24

TOOL LOCATION c:\program files (x86)\arcgis\desktop10.4\ArcToolbox\Toolboxes\Spatial Analyst Tools.tbx\Reclassify

COMMAND ISSUED

```

Reclassify PORCENT_DENSIDADE_NAV_EMB_BRxTR_REV01 VALUE "0 0,100000 1;0,100000 0,250000 2;0,250000 0,500000 3;0,500000 0,750000
4;0,750000 0,900000 5;0,900000 1 6" \\dragon\bs_gis_sms$\GIS_SMS_RESERVADO\2.OSGeo\OSGeo_2017\007_20170113_PMTE2016
\2.Geoprocessamento_Auxiliar\Tratamento_dados_PMTE_2016.gdb\CLASSIFICACAO_PORCENT_DENSIDADE_NAV_EMB_BRxTR_REV01 DATA
INCLUDE IN LINEAGE WHEN EXPORTING METADATA No

```

PROCESS

PROCESS NAME

DATE 2017-09-20 10:20:15

TOOL LOCATION c:\program files (x86)\arcgis\desktop10.4\ArcToolbox\Toolboxes\Data Management Tools.tbx\ProjectRaster

COMMAND ISSUED

```

ProjectRaster CLASSIFICACAO_PORCENT_DENSIDADE_NAV_EMB_BRxTR_REV01 \\dragon\bs_gis_sms$\GIS_SMS_RESERVADO\2.OSGeo\OSGeo_2017
\007_20170113_PMTE2016\3.Entregaveis\Banco_dados_PMTE_2016
\RASTER\PETROBRAS_02022_000409_2014_15_Brasil_PETROBRAS_2017_01_15_PORCENT_DENSIDADE_NAV_EMB_BRxTR.tif GEOGCS['GCS_SIRGAS_2000',DATUM
['D_SIRGAS_2000',SPHEROID['GRS_1980',6378137.0,298.257222101]],PRIMEM['Greenwich',0.0],UNIT['Degree',0.0174532925199433]] NEAREST
"4,81435741181634E-03 4,81435741181634E-03" 'WGS_1984 para SIRGAS_2000' # PROJCS['WGS_1984_UTM_Zone_23S',GEOGCS['GCS_WGS_1984',DATUM
['D_WGS_1984',SPHEROID['WGS_1984',6378137.0,298.257223563]],PRIMEM['Greenwich',0.0],UNIT['Degree',0.0174532925199433]],PROJECTION
['Transverse_Mercator'],PARAMETER['False_Easting',500000.0],PARAMETER['False_Northing',1000000.0],PARAMETER['Central_Meridian',-
45.0],PARAMETER['Scale_Factor',0.9996],PARAMETER['Latitude_Of_Origin',0.0],UNIT['Meter',1.0]]
INCLUDE IN LINEAGE WHEN EXPORTING METADATA No

```

[Hide Geoprocessing history ▲](#)

Distribution ►

DISTRIBUTION FORMAT

* NAME Raster Dataset

[Hide Distribution ▲](#)

Fields ►

DETAILS FOR OBJECT PETROBRAS_02022_000409_2014_15_Brasil_PETROBRAS_2017_01_15_PORCENT_DENSIDADE_NAV_EMB_BRxTR.tif.vat ►

* TYPE Table

* ROW COUNT 6

FIELD OID ►

* ALIAS OID

* DATA TYPE OID

* WIDTH 4

* PRECISION 0

* SCALE 0

* FIELD DESCRIPTION

Internal feature number.

* DESCRIPTION SOURCE

Esri

* DESCRIPTION OF VALUES

Sequential unique whole numbers that are automatically generated.

[Hide Field OID ▲](#)

FIELD Value ►

* ALIAS Value

* DATA TYPE Integer

* WIDTH 10

* PRECISION 10

* SCALE 0

[Hide Field Value ▲](#)

FIELD Count ►

* ALIAS Count

* DATA TYPE Double

* WIDTH 19

* PRECISION 0

* SCALE 0

[Hide Field Count ▲](#)[Hide Details for object PETROBRAS_02022_000409_2014_15_Brasil_PETROBRAS_2017_01_15_PORCENT_DENSIDADE_NAV_EMB_BRxTR.tif.vat ▲](#)[Hide Fields ▲](#)

Metadata Details ►

* METADATA LANGUAGE Portuguese (BRAZIL)

SCOPE OF THE DATA DESCRIBED BY THE METADATA * dataset

SCOPE NAME * dataset

* LAST UPDATE 2017-09-27

ARCGIS METADATA PROPERTIES

METADATA FORMAT ArcGIS 1.0

METADATA STYLE FGDC CSDGM Metadata

STANDARD OR PROFILE USED TO EDIT METADATA FGDC

CREATED IN ARCGIS FOR THE ITEM 2017-09-19 15:00:24

LAST MODIFIED IN ARCGIS FOR THE ITEM 2017-09-27 14:13:24

AUTOMATIC UPDATES

HAVE BEEN PERFORMED Yes

LAST UPDATE 2017-09-27 14:13:24

[Hide Metadata Details ▲](#)

Thumbnail and Enclosures ▶

THUMBNAIL

THUMBNAIL TYPE JPG

Hide Thumbnail and Enclosures ▲

FGDC Metadata (read-only) ▼