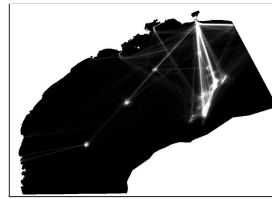


PETROBRAS_02022_000409_2014_15_BSant_PETROBRAS_2019_DENSIDADE_BR.tif**Raster Dataset****Tags**

DENSIDADE; NAVEGAÇÃO; EMBARCAÇÕES; PETROBRAS; PMTE; BACIA DE SANTOS;

Summary

O Projeto de Monitoramento do Tráfego de Embarcações (PMTE) da Bacia de Santos foi elaborado em atendimento à solicitação da CGPEG/IBAMA, emitida por meio da condicionante específica nº 2.10 da LP nº 0491/2014. A elaboração e o desenvolvimento do PMTE foram baseados nas orientações do parecer técnico PAR 02022.000409/2014-15 CGPEG/IBAMA, de 12 de setembro de 2014, e do parecer técnico PAR 02022.000548/2014-31 CGPEG/IBAMA, 19 de novembro de 2014, bem como nas informações contidas nas respectivas respostas dos pareceres supracitados, encaminhadas pela PETROBRAS ao IBAMA através da carta DE&P 0218/2014, de 13 de outubro de 2014, a qual também encaminhou o projeto atualmente aprovado, e da carta UOBS 0080/2015, de 12 de fevereiro de 2015.

Description

Raster da Densidade de Navegação das Embarcações PETROBRAS na Bacia de Santos, ano 2018.

Credits

PETROBRAS - SUB/OPSUB/GDSO/GDS

Use limitations

There are no access and use limitations for this item.

Extent

West -48.850073 **East** -40.351955
North -22.615485 **South** -27.937741

Scale Range

Maximum (zoomed in) 1:5,000
Minimum (zoomed out) 1:150,000,000

ArcGIS Metadata ►**Topics and Keywords ►**

* **CONTENT TYPE** Downloadable Data

[Hide Topics and Keywords ▲](#)

Citation ►

* **TITLE** PETROBRAS_02022_000409_2014_15_BSant_PETROBRAS_2019_DENSIDADE_BR.tif

PRESENTATION FORMATS * digital map

[Hide Citation ▲](#)

Resource Details ►

DATASET LANGUAGES * Portuguese (BRAZIL)

SPATIAL REPRESENTATION TYPE * grid

* **PROCESSING ENVIRONMENT** Microsoft Windows 7 Version 6.1 (Build 7601) Service Pack 1; Esri ArcGIS 10.5.1.7333

CREDITS

PETROBRAS - SUB/OPSUB/GDSO/GDS

ARC GIS ITEM PROPERTIES

* **NAME** PETROBRAS_02022_000409_2014_15_BSant_PETROBRAS_2019_DENSIDADE_BR.tif

* **LOCATION** file:///Z:/GIS_SMS_RESERVADO/2.OSGeo/OSGeo_2019/016_PMTE_2018

\2.Geoprocessamento_Auxiliar\PMTE2018_BDG_BS\3_RASTER\PETROBRAS_02022_000409_2014_15_BSant_PETROBRAS_2019_DENSIDADE_BR.tif

* **ACCESS PROTOCOL** Local Area Network

[Hide Resource Details ▲](#)

Extents ►**EXTENT****GEOGRAPHIC EXTENT****BOUNDING RECTANGLE**

EXTENT TYPE Extent used for searching

* WEST LONGITUDE -48.850073
 * EAST LONGITUDE -40.351955
 * NORTH LATITUDE -22.615485
 * SOUTH LATITUDE -27.937741
 * EXTENT CONTAINS THE RESOURCE Yes

EXTENT IN THE ITEM'S COORDINATE SYSTEM

* WEST LONGITUDE 120884.551090
 * EAST LONGITUDE 957884.551090
 * SOUTH LATITUDE 6909694.312967
 * NORTH LATITUDE 7492194.312967
 * EXTENT CONTAINS THE RESOURCE Yes

[Hide Extents ▲](#)

Resource Constraints ►

CONSTRAINTS

LIMITATIONS OF USE

There are no access and use limitations for this item.

[Hide Resource Constraints ▲](#)

Spatial Reference ►

ARCGIS COORDINATE SYSTEM

* TYPE **Projected**
 * GEOGRAPHIC COORDINATE REFERENCE GCS_SIRGAS_2000
 * PROJECTION SIRGAS_2000_UTM_Zone_23S
 * COORDINATE REFERENCE DETAILS

PROJECTED COORDINATE SYSTEM

WELL-KNOWN IDENTIFIER 31983
 X ORIGIN -5120900
 Y ORIGIN 1900
 XY SCALE 450445547.3910538
 Z ORIGIN -100000
 Z SCALE 10000
 M ORIGIN -100000
 M SCALE 10000
 XY TOLERANCE 0.001
 Z TOLERANCE 0.001
 M TOLERANCE 0.001
 HIGH PRECISION true

LATEST WELL-KNOWN IDENTIFIER 31983

WELL-KNOWN TEXT PROJCS["SIRGAS_2000_UTM_Zone_23S",GEOGCS["GCS_SIRGAS_2000",DATUM["D_SIRGAS_2000",SPHEROID
 ["GRS_1980",6378137.0,298.257222101]],PRIMEM["Greenwich",0.0],UNIT["Degree",0.0174532925199433]],PROJECTION
 ["Transverse_Mercator"],PARAMETER["False_Easting",500000.0],PARAMETER["False_Northing",1000000.0],PARAMETER["Central_Meridian",-
 45.0],PARAMETER["Scale_Factor",0.9996],PARAMETER["Latitude_Of_Origin",0.0],UNIT["Meter",1.0],AUTHORITY["EPSG",31983]]

REFERENCE SYSTEM IDENTIFIER

* VALUE 31983
 * CODESPACE EPSG
 * VERSION 7.8.3(8.1.2)

[Hide Spatial Reference ▲](#)

Spatial Data Properties ►

GEORECTIFIED GRID ►

* NUMBER OF DIMENSIONS 2

AXIS DIMENSIONS PROPERTIES

DIMENSION TYPE column (x-axis)
 * DIMENSION SIZE 1674
 * RESOLUTION 500.000000 m (meter)

AXIS DIMENSIONS PROPERTIES

DIMENSION TYPE row (y-axis)
 * DIMENSION SIZE 1165
 * RESOLUTION 500.000000 m (meter)

* CELL GEOMETRY area

* POINT IN PIXEL center

* TRANSFORMATION PARAMETERS ARE AVAILABLE Yes

* CHECK POINTS ARE AVAILABLE No

CORNER POINTS

* POINT 120884.551090 6909694.312967
 * POINT 120884.551090 7492194.312967
 * POINT 957884.551090 7492194.312967
 * POINT 957884.551090 6909694.312967
 * CENTER POINT 539384.551090 7200944.312967

[Hide Georectified Grid ▲](#)

ARCGIS RASTER PROPERTIES ►

GENERAL INFORMATION

* PIXEL DEPTH 32
 * COMPRESSION TYPE None
 * NUMBER OF BANDS 1
 * RASTER FORMAT TIFF
 * SOURCE TYPE discrete

* PIXEL TYPE unsigned integer
 * NO DATA VALUE 65536
 * HAS COLORMAP No
 * HAS PYRAMIDS Yes

[Hide ArcGIS Raster Properties ▲](#)

[Hide Spatial Data Properties ▲](#)

Spatial Data Content ►

IMAGE DESCRIPTION

* TYPE OF INFORMATION thematic classification

BAND INFORMATION

* DESCRIPTION Band_1
 * MAXIMUM VALUE 8950.000000
 * MINIMUM VALUE 0.000000
 * NUMBER OF BITS PER VALUE 32

[Hide Spatial Data Content ▲](#)

Distribution ►

DISTRIBUTION FORMAT

* NAME Raster Dataset

[Hide Distribution ▲](#)

Fields ►

DETAILS FOR OBJECT PETROBRAS_02022_000409_2014_15_BSant_PETROBRAS_2019_DENSIDADE_BR.tif.vat ►

* TYPE Table
 * ROW COUNT 1026

FIELD OID ►

* ALIAS OID
 * DATA TYPE OID
 * WIDTH 4
 * PRECISION 0
 * SCALE 0
 * FIELD DESCRIPTION
 Internal feature number.

* DESCRIPTION SOURCE
Esri

* DESCRIPTION OF VALUES
Sequential unique whole numbers that are automatically generated.

[Hide Field OID ▲](#)

FIELD Value ►

* ALIAS Value
 * DATA TYPE Integer
 * WIDTH 10
 * PRECISION 10
 * SCALE 0

[Hide Field Value ▲](#)

FIELD Count ►

* ALIAS Count
 * DATA TYPE Double
 * WIDTH 19
 * PRECISION 0
 * SCALE 0

[Hide Field Count ▲](#)

[Hide Details for object PETROBRAS_02022_000409_2014_15_BSant_PETROBRAS_2019_DENSIDADE_BR.tif.vat ▲](#)

[Hide Fields ▲](#)

Metadata Details ►

* METADATA LANGUAGE Portuguese (BRAZIL)

SCOPE OF THE DATA DESCRIBED BY THE METADATA * dataset

SCOPE NAME * dataset

* LAST UPDATE 2019-10-28

ARCGIS METADATA PROPERTIES

METADATA FORMAT ArcGIS 1.0
 METADATA STYLE INSPIRE Metadata Directive
 STANDARD OR PROFILE USED TO EDIT METADATA INSPIRE

CREATED IN ARCGIS FOR THE ITEM 2019-10-28 11:40:13
 LAST MODIFIED IN ARCGIS FOR THE ITEM 2019-10-28 16:41:25

AUTOMATIC UPDATES

HAVE BEEN PERFORMED Yes
 LAST UPDATE 2019-10-28 16:41:25

ITEM LOCATION HISTORY

ITEM COPIED OR MOVED 2019-10-28 11:40:13
 FROM Z:\GIS_SMS_RESERVADO\2.OSGeo\OSGeo_2019\016_PMTE_2018
 \2.Geoprocessamento_Auxiliar\07_Raster\PMTE2018_DENSIDADE_BR.tif
 TO \\dragon\bs_gis_sms\$\GIS_SMS_RESERVADO\2.OSGeo\OSGeo_2019\016_PMTE_2018
 \2.Geoprocessamento_Auxiliar\PMTE2018_BDG_BS\3_RASTER\PMTE2018_DENSIDADE_BR.tif

[Hide Metadata Details ▲](#)

Thumbnail and Enclosures ►

THUMBNAIL

THUMBNAIL TYPE JPG

[Hide Thumbnail and Enclosures ▲](#)

FGDC Metadata (read-only) ▼