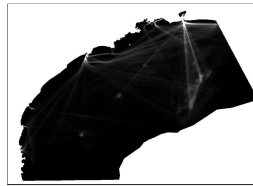


PETROBRAS_02022_000409_2014_15_BSant_PETROBRAS_2019_DENSIDADE_TOTAL_BR_soma_TE**Raster Dataset****Tags**

CLASSIFICAÇÃO; DENSIDADE; EMBARCAÇÕES; PETROBRAS; PMTE;

Summary

O Projeto de Monitoramento do Tráfego de Embarcações (PMTE) da Baía de Santos foi elaborado em atendimento à solicitação da CGPEG/IBAMA, emitida por meio da condicionante específica nº 2.10 da LP nº 0491/2014. A elaboração e o desenvolvimento do PMTE foram baseados nas orientações do parecer técnico PAR 02022.000409/2014-15 CGPEG/IBAMA, de 12 de setembro de 2014, e do parecer técnico PAR 02022.000548/2014-31 CGPEG/IBAMA, 19 de novembro de 2014, bem como nas informações contidas nas respectivas respostas dos pareceres supracitados, encaminhadas pela PETROBRAS ao IBAMA através da carta DE&P 0218/2014, de 13 de outubro de 2014, a qual também encaminhou o projeto atualmente aprovado, e da carta UOBS 0080/2015, de 12 de fevereiro de 2015.

Description

Arquivo em formato raster indica as áreas onde foram registrados as maiores densidades de navegação das Embarcações PETROBRAS e TERCEIROS na Baía de Santos, ano 2018.

Credits

PETROBRAS - SUB/OPSUB/GDSO/GDS

Use limitations

There are no access and use limitations for this item.

Extent

West -48.850073 **East** -40.351955
North -22.615485 **South** -27.937741

Scale Range

Maximum (zoomed in) 1:5,000
Minimum (zoomed out) 1:150,000,000

ArcGIS Metadata ►**Topics and Keywords ►**

* CONTENT TYPE Downloadable Data

[Hide Topics and Keywords ▲](#)**Citation ►**

* TITLE PETROBRAS_02022_000409_2014_15_BSant_PETROBRAS_2019_DENSIDADE_TOTAL_BR_soma_TERC.tif

PRESENTATION FORMATS * digital map

[Hide Citation ▲](#)**Resource Details ►**

DATASET LANGUAGES * Portuguese (BRAZIL)

SPATIAL REPRESENTATION TYPE * grid

* PROCESSING ENVIRONMENT Microsoft Windows 7 Version 6.1 (Build 7601) Service Pack 1; Esri ArcGIS 10.5.1.7333

CREDITS

PETROBRAS - SUB/OPSUB/GDSO/GDS

ARC GIS ITEM PROPERTIES

* NAME PETROBRAS_02022_000409_2014_15_BSant_PETROBRAS_2019_DENSIDADE_TOTAL_BR_soma_TERC.tif

* LOCATION file:///Z:/GIS_SMS_RESERVADO/2.OSGeo/OSGeo_2019/016_PMTE_2018

\\2.Geoprocessamento_Auxiliar\PMTE2018_BDG_BS\3_RASTER\PETROBRAS_02022_000409_2014_15_BSant_PETROBRAS_2019_DENSIDADE_TOTAL_BR_soma

* ACCESS PROTOCOL Local Area Network

[Hide Resource Details ▲](#)**Extents ►****EXTENT****GEOGRAPHIC EXTENT****BOUNDING RECTANGLE**

EXTENT TYPE Extent used for searching

* WEST LONGITUDE -48.850073

* EAST LONGITUDE -40.351955

* NORTH LATITUDE -22.615485

* SOUTH LATITUDE -27.937741

* EXTENT CONTAINS THE RESOURCE Yes

EXTENT IN THE ITEM'S COORDINATE SYSTEM

* WEST LONGITUDE 120884.551090

* EAST LONGITUDE 957884.551090

* SOUTH LATITUDE 6909694.312967

* NORTH LATITUDE 7492194.312967

* EXTENT CONTAINS THE RESOURCE Yes

[Hide Extents ▲](#)

Spatial Reference ►

ARCGIS COORDINATE SYSTEM

* TYPE **Projected**

* GEOGRAPHIC COORDINATE REFERENCE GCS_SIRGAS_2000

* PROJECTION SIRGAS_2000_UTM_Zone_23S

* COORDINATE REFERENCE DETAILS

PROJECTED COORDINATE SYSTEM

WELL-KNOWN IDENTIFIER 31983

X ORIGIN -5120900

Y ORIGIN 1900

XY SCALE 450445547.3910538

Z ORIGIN -100000

Z SCALE 10000

M ORIGIN -100000

M SCALE 10000

XY TOLERANCE 0.001

Z TOLERANCE 0.001

M TOLERANCE 0.001

HIGH PRECISION true

LATEST WELL-KNOWN IDENTIFIER 31983

WELL-KNOWN TEXT PROJCS["SIRGAS_2000_UTM_Zone_23S",GEOGCS["GCS_SIRGAS_2000",DATUM["D_SIRGAS_2000",SPHEROID["GRS_1980",6378137.0,298.257222101]],PRIMEM["Greenwich",0.0],UNIT["Degree",0.0174532925199433]],PROJECTION["Transverse_Mercator"],PARAMETER["False_Easting",500000.0],PARAMETER["False_Northing",1000000.0],PARAMETER["Central_Meridian",-45.0],PARAMETER["Scale_Factor",0.9996],PARAMETER["Latitude_Of_Origin",0.0],UNIT["Meter",1.0],AUTHORITY["EPSG",31983]]

REFERENCE SYSTEM IDENTIFIER

* VALUE 31983

* CODESPACE EPSG

* VERSION 7.8.3(8.1.2)

[Hide Spatial Reference ▲](#)

Spatial Data Properties ►

GEORECTIFIED GRID ►

* NUMBER OF DIMENSIONS 2

AXIS DIMENSIONS PROPERTIES

DIMENSION TYPE column (x-axis)

* DIMENSION SIZE 1674

* RESOLUTION 500.000000 m (meter)

AXIS DIMENSIONS PROPERTIES

DIMENSION TYPE row (y-axis)

* DIMENSION SIZE 1165

* RESOLUTION 500.000000 m (meter)

* CELL GEOMETRY area

* POINT IN PIXEL center

* TRANSFORMATION PARAMETERS ARE AVAILABLE Yes

* CHECK POINTS ARE AVAILABLE No

CORNER POINTS

* POINT 120884.551090 6909694.312967

* POINT 120884.551090 7492194.312967

* POINT 957884.551090 7492194.312967

* POINT 957884.551090 6909694.312967

* CENTER POINT 539384.551090 7200944.312967

[Hide Georectified Grid ▲](#)

ARCGIS RASTER PROPERTIES ►

GENERAL INFORMATION

* PIXEL DEPTH 32

* COMPRESSION TYPE None

* NUMBER OF BANDS 1

* RASTER FORMAT TIFF

* SOURCE TYPE discrete

* PIXEL TYPE unsigned integer

* NO DATA VALUE 65536

* HAS COLORMAP No

* HAS PYRAMIDS Yes

[Hide ArcGIS Raster Properties ▲](#)

[Hide Spatial Data Properties ▲](#)

Spatial Data Content ►

IMAGE DESCRIPTION

* TYPE OF INFORMATION thematic classification

BAND INFORMATION

* DESCRIPTION Band_1

* MAXIMUM VALUE 60086.000000

* MINIMUM VALUE 0.000000

* NUMBER OF BITS PER VALUE 32

[Hide Spatial Data Content ▲](#)

Distribution ►

DISTRIBUTION FORMAT

* NAME Raster Dataset

[Hide Distribution ▲](#)

Fields ►

DETAILS FOR OBJECT PETROBRAS_02022_000409_2014_15_BSant_PETROBRAS_2019_DENSIDADE_TOTAL_BR_soma_TERC.tif.vat ►

* TYPE Table

* ROW COUNT 1964

FIELD OID ►

* ALIAS OID

* DATA TYPE OID

* WIDTH 4

* PRECISION 0

* SCALE 0

* FIELD DESCRIPTION
Internal feature number.

* DESCRIPTION SOURCE
Esri

* DESCRIPTION OF VALUES
Sequential unique whole numbers that are automatically generated.

[Hide Field OID ▲](#)

FIELD Value ►

* ALIAS Value

* DATA TYPE Integer

* WIDTH 10

* PRECISION 10

* SCALE 0

[Hide Field Value ▲](#)

FIELD Count ►

* ALIAS Count

* DATA TYPE Double

* WIDTH 19

* PRECISION 0

* SCALE 0

[Hide Field Count ▲](#)

[Hide Details for object PETROBRAS_02022_000409_2014_15_BSant_PETROBRAS_2019_DENSIDADE_TOTAL_BR_soma_TERC.tif.vat ▲](#)

[Hide Fields ▲](#)

Metadata Details ►

* METADATA LANGUAGE Portuguese (BRAZIL)

SCOPE OF THE DATA DESCRIBED BY THE METADATA * dataset

SCOPE NAME * dataset

* LAST UPDATE 2019-10-28

ARCGIS METADATA PROPERTIES

METADATA FORMAT ArcGIS 1.0

METADATA STYLE INSPIRE Metadata Directive

STANDARD OR PROFILE USED TO EDIT METADATA INSPIRE

CREATED IN ARCGIS FOR THE ITEM 2019-10-28 11:40:05

LAST MODIFIED IN ARCGIS FOR THE ITEM 2019-10-28 18:38:19

AUTOMATIC UPDATES

HAVE BEEN PERFORMED Yes

LAST UPDATE 2019-10-28 18:37:30

ITEM LOCATION HISTORY

ITEM COPIED OR MOVED 2019-10-28 11:40:05

FROM Z:\GIS_SMS_RESERVADO\2.OSGeo\OSGeo_2019\016_PMTE_2018

\2.Geoprocessamento_Auxiliar\07_Raster\PMTE2018_DENSIDADE_TOTAL_BR_soma_TERC.tif

To \\dragon\bs_gis_sms\$\GIS_SMS_RESERVADO\2.OSGeo\OSGeo_2019\016_PMTE_2018

\2.Geoprocessamento_Auxiliar\PMTE2018_BDG_BS\3_RASTER\PMTE2018_DENSIDADE_TOTAL_BR_soma_TERC.tif

[Hide Metadata Details ▲](#)

Thumbnail and Enclosures ►

THUMBNAIL

THUMBNAIL TYPE JPG

[Hide Thumbnail and Enclosures ▲](#)

FGDC Metadata (read-only) ▼