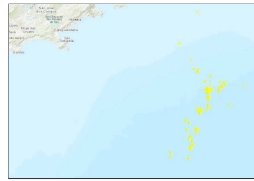


PETROBRAS_02022_000409_2014_15_BSant_PETROBRAS_2018_08_15_Sondas

Shapefile



Tags

SONDAS;SEMISSUBMERSÍVEL, UNIDADES MÓVEIS

Summary

Unidades Marítimas móveis

Description

Localização dos atendimentos as Unidades Marítimas Móveis (Navio Sonda e Semissubmersível) no ano de 2018. Unidades destinadas a atividade de perfuração ou exploração/produção.

Credits

PETROBRAS SUB/OPSUB/GDSO/GDS. Santos, 2018.

Use limitations

There are no access and use limitations for this item.

Extent

West -43.228590 **East** -41.761570
North -22.876740 **South** -25.872060

Scale Range

Maximum (zoomed in) 1:5,000
Minimum (zoomed out) 1:150,000,000

ArcGIS Metadata ►**Topics and Keywords ►**

THEMES OR CATEGORIES OF THE RESOURCE imageryBaseMapsEarthCover, location

* CONTENT TYPE Downloadable Data
 EXPORT TO FGDC CSDGM XML FORMAT AS RESOURCE DESCRIPTION No

[Hide Topics and Keywords ▲](#)**Citation ►**

* TITLE PETROBRAS_02022_000409_2014_15_BSant_PETROBRAS_2018_08_15_Sondas
 ALTERNATE TITLES Atendimentos as unidades marítimas móveis - Sondas NS e SS
 CREATION DATE 2019-10-29 00:00:00
 PUBLICATION DATE 2019-10-29 00:00:00
 REVISION DATE 2019-10-29 00:00:00

PRESENTATION FORMATS * digital map

COLLECTION TITLE Atendimentos as unidades marítimas móveis - Sondas NS e SS

ISBN não definido

[Hide Citation ▲](#)**Resource Details ►**

DATASET LANGUAGES * Portuguese (BRAZIL)

SPATIAL REPRESENTATION TYPE * vector

* PROCESSING ENVIRONMENT Microsoft Windows 7 Version 6.1 (Build 7601) Service Pack 1; Esri ArcGIS 10.5.0.6491

CREDITS

PETROBRAS SUB/OPSUB/GDSO/GDS. Santos, 2018.

ARCGIS ITEM PROPERTIES

* NAME PETROBRAS_02022_000409_2014_15_BSant_PETROBRAS_2018_08_15_Sondas
 * SIZE 0.135
 * LOCATION file:///\\dragon\bs_gis_sms\$\\GIS_SMS_RESERVADO\\2.OSGeo\\OSGeo_2019\\016_PMTE_2018\\2.Geoprocessamento_Auxiliar\\PMTE2018_BDG_BS\\2_SHAPEFILE\\PETROBRAS_02022_000409_2014_15_BSant_PETROBRAS_2018_08_15_Sondas.shp
 * ACCESS PROTOCOL Local Area Network

[Hide Resource Details ▲](#)**Extents ►****EXTENT****GEOGRAPHIC EXTENT****BOUNDING RECTANGLE**

EXTENT TYPE Extent used for searching

* WEST LONGITUDE -43.228590

* EAST LONGITUDE -41.761570

* NORTH LATITUDE -22.876740

* SOUTH LATITUDE -25.872060

* EXTENT CONTAINS THE RESOURCE Yes

EXTENT IN THE ITEM'S COORDINATE SYSTEM

* WEST LONGITUDE -43.228590
 * EAST LONGITUDE -41.761570
 * SOUTH LATITUDE -25.872060
 * NORTH LATITUDE -22.876740
 * EXTENT CONTAINS THE RESOURCE Yes

[Hide Extents ▲](#)

Spatial Reference ►

ARCGIS COORDINATE SYSTEM

* TYPE **Geographic**
 * GEOGRAPHIC COORDINATE REFERENCE GCS_WGS_1984
 * COORDINATE REFERENCE DETAILS
 GEOGRAPHIC COORDINATE SYSTEM
 WELL-KNOWN IDENTIFIER 4326
 X ORIGIN -400
 Y ORIGIN -400
 XY SCALE 11258999068426.238
 Z ORIGIN -100000
 Z SCALE 10000
 M ORIGIN -100000
 M SCALE 10000
 XY TOLERANCE 8.983152841195215e-009
 Z TOLERANCE 0.001
 M TOLERANCE 0.001
 HIGH PRECISION true
 LEFT LONGITUDE -180
 LATEST WELL-KNOWN IDENTIFIER 4326
 WELL-KNOWN TEXT GEOGCS["GCS_WGS_1984",DATUM["D_WGS_1984",SPHEROID["WGS_1984",6378137.0,298.257223563]],PRIMEM
 ["Greenwich",0.0],UNIT["Degree",0.0174532925199433],AUTHORITY["EPSG",4326]]

REFERENCE SYSTEM IDENTIFIER

* VALUE 4326
 * CODESPACE EPSG
 * VERSION 6.14(3.0.1)

[Hide Spatial Reference ▲](#)

Spatial Data Properties ►

VECTOR ►

* LEVEL OF TOPOLOGY FOR THIS DATASET geometry only

GEOMETRIC OBJECTS

FEATURE CLASS NAME PETROBRAS_02022_000409_2014_15_BSant_PETROBRAS_2018_08_15_Sondas
 * OBJECT TYPE point
 * OBJECT COUNT 5062

[Hide Vector ▲](#)

ARCGIS FEATURE CLASS PROPERTIES ►

FEATURE CLASS NAME PETROBRAS_02022_000409_2014_15_BSant_PETROBRAS_2018_08_15_Sondas
 * FEATURE TYPE Simple
 * GEOMETRY TYPE Point
 * HAS TOPOLOGY FALSE
 * FEATURE COUNT 5062
 * SPATIAL INDEX TRUE
 * LINEAR REFERENCING FALSE

[Hide ArcGIS Feature Class Properties ▲](#)

[Hide Spatial Data Properties ▲](#)

Geoprocessing history ►

PROCESS

PROCESS NAME
 DATE 2019-10-29 14:51:49
 TOOL LOCATION c:\program files (x86)\arcgis\desktop10.5\ArcToolbox\Toolboxes\Conversion Tools.tbx\FeatureClassToFeatureClass
 COMMAND ISSUED

```
FeatureClassToFeatureClass \\dragon\bs_gis_sms$\GIS_SMS_RESERVADO\2.OSGeo\OSGeo_2019\016_PMTE_2018
\\2.Geoprocessamento Auxiliiar\04_Geodatabase\PMTE_2018_BS.gdb\ATD_SONDAS\ATD_UM_MOVEIS_REV04
\\dragon\bs_gis_sms$\GIS_SMS_RESERVADO\2.OSGeo\OSGeo_2019\016_PMTE_2018\2.Geoprocessamento Auxiliiar\PMTE2018_BDG_BS\2_SHAPEFILE
PETROBRAS_02022_000409_2014_15_BSant_PETROBRAS_2018_08_15_Sondas.shp # "FID_ETAPA1 "FID_ETAPA1" true true false 4 Long 0
0 ,First,#,\\dragon\bs_gis_sms$\GIS_SMS_RESERVADO\2.OSGeo\OSGeo_2019\016_PMTE_2018
\\2.Geoprocessamento Auxiliiar\04_Geodatabase\PMTE_2018_BS.gdb\ATD_SONDAS\ATD_UM_MOVEIS_REV04,FID_ETAPA1 BUFFER UM MOVEIS 500m,-1,-
1;BACI_CD_ID "BACI_CD_ID" true true false 4 Long 0 0 ,First,#,\\dragon\bs_gis_sms$\GIS_SMS_RESERVADO\2.OSGeo\OSGeo_2019\016_PMTE_2018
\\2.Geoprocessamento Auxiliiar\04_Geodatabase\PMTE_2018_BS.gdb\ATD_SONDAS\ATD_UM_MOVEIS_REV04,BACI_CD_ID,-1,-1;BACI_NM_BA "BACI_NM_BA"
true true false 50 Text 0 0 ,First,#,\\dragon\bs_gis_sms$\GIS_SMS_RESERVADO\2.OSGeo\OSGeo_2019\016_PMTE_2018
\\2.Geoprocessamento Auxiliiar\04_Geodatabase\PMTE_2018_BS.gdb\ATD_SONDAS\ATD_UM_MOVEIS_REV04,BACI_MD_AR
"BACI_MD_AR" true true false 8 Double 0 0 ,First,#,\\dragon\bs_gis_sms$\GIS_SMS_RESERVADO\2.OSGeo\OSGeo_2019\016_PMTE_2018
\\2.Geoprocessamento Auxiliiar\04_Geodatabase\PMTE_2018_BS.gdb\ATD_SONDAS\ATD_UM_MOVEIS_REV04,BACI_MD_ARA,-1,-1;MOVE_CD_ID
"MOVE_CD_ID" true true false 4 Long 0 0 ,First,#,\\dragon\bs_gis_sms$\GIS_SMS_RESERVADO\2.OSGeo\OSGeo_2019\016_PMTE_2018
\\2.Geoprocessamento Auxiliiar\04_Geodatabase\PMTE_2018_BS.gdb\ATD_SONDAS\ATD_UM_MOVEIS_REV04,MOVE_CD_ID,-1,-1;NOME_PLATA "NOME_PLATA"
true true false 100 Text 0 0 ,First,#,\\dragon\bs_gis_sms$\GIS_SMS_RESERVADO\2.OSGeo\OSGeo_2019\016_PMTE_2018
\\2.Geoprocessamento Auxiliiar\04_Geodatabase\PMTE_2018_BS.gdb\ATD_SONDAS\ATD_UM_MOVEIS_REV04,NOME_PLATAFORMA,-1,-1;SIGLA_PLAT
"SIGLA_PLAT" true true false 50 Text 0 0 ,First,#,\\dragon\bs_gis_sms$\GIS_SMS_RESERVADO\2.OSGeo\OSGeo_2019\016_PMTE_2018
\\2.Geoprocessamento Auxiliiar\04_Geodatabase\PMTE_2018_BS.gdb\ATD_SONDAS\ATD_UM_MOVEIS_REV04,SIGLA_PLATAFORMA,-1,-1;POSI_DT_DA
"POSI_DT_DA" true true false 8 Date 0 0 ,First,#,\\dragon\bs_gis_sms$\GIS_SMS_RESERVADO\2.OSGeo\OSGeo_2019\016_PMTE_2018
\\2.Geoprocessamento Auxiliiar\04_Geodatabase\PMTE_2018_BS.gdb\ATD_SONDAS\ATD_UM_MOVEIS_REV04,POSI_DT_DATAHORA,-1,-1;COORD_NORT
"COORD_NORT" true true false 8 Double 0 0 ,First,#,\\dragon\bs_gis_sms$\GIS_SMS_RESERVADO\2.OSGeo\OSGeo_2019\016_PMTE_2018
\\2.Geoprocessamento Auxiliiar\04_Geodatabase\PMTE_2018_BS.gdb\ATD_SONDAS\ATD_UM_MOVEIS_REV04,COORD_NORTE,-1,-1;COORD_ESTE "COORD_ESTE"
true true false 8 Double 0 0 ,First,#,\\dragon\bs_gis_sms$\GIS_SMS_RESERVADO\2.OSGeo\OSGeo_2019\016_PMTE_2018
\\2.Geoprocessamento Auxiliiar\04_Geodatabase\PMTE_2018_BS.gdb\ATD_SONDAS\ATD_UM_MOVEIS_REV04,COORD_ESTE,-1,-1;PROJCAO "PROJCAO" true
true false 5 Text 0 0 ,First,#,\\dragon\bs_gis_sms$\GIS_SMS_RESERVADO\2.OSGeo\OSGeo_2019\016_PMTE_2018
\\2.Geoprocessamento Auxiliiar\04_Geodatabase\PMTE_2018_BS.gdb\ATD_SONDAS\ATD_UM_MOVEIS_REV04,PROJCAO,-1,-1;DATUM "DATUM" true true
false 15 Text 0 0 ,First,#,\\dragon\bs_gis_sms$\GIS_SMS_RESERVADO\2.OSGeo\OSGeo_2019\016_PMTE_2018
\\2.Geoprocessamento Auxiliiar\04_Geodatabase\PMTE_2018_BS.gdb\ATD_SONDAS\ATD_UM_MOVEIS_REV04,DATUM,-1,-1;MERIDIANO_ "MERIDIANO_" true
true false 6 Text 0 0 ,First,#,\\dragon\bs_gis_sms$\GIS_SMS_RESERVADO\2.OSGeo\OSGeo_2019\016_PMTE_2018
\\2.Geoprocessamento Auxiliiar\04_Geodatabase\PMTE_2018_BS.gdb\ATD_SONDAS\ATD_UM_MOVEIS_REV04,MERIDIANO_CENTRAL,-1,-1;DATA_ATUAL
```

file:///C:/Users/bafr/AppData/Local/Temp/tmpAD1A.tmp.htm

```
"EQT1_TX_1" true true false 50 Text 0 0 ,First,#,\\dragon\bs_gis_sms$\GIS_SMS_RESERVADO\2.OSGeo\OSGeo_2019\016_PMT_2018
\2.Geoprocessamento Auxiliari\04_Geodatabase\PMTE_2018_BS.gdb\ATD_SONDAS\ATD_UM_MOVEIS_REV04,EQT1_TX_DESCRICAO_1,-1,-1;POSI_CD__1
"POSI_CD__1" true true false 4 Long 0 0 ,First,#,\\dragon\bs_gis_sms$\GIS_SMS_RESERVADO\2.OSGeo\OSGeo_2019\016_PMT_2018
\2.Geoprocessamento Auxiliari\04_Geodatabase\PMTE_2018_BS.gdb\ATD_SONDAS\ATD_UM_MOVEIS_REV04,POSI_CD_ID_1,-1,-1;POSI_NR__1
"POSI_NR__1" true true false 8 Double 0 0 ,First,#,\\dragon\bs_gis_sms$\GIS_SMS_RESERVADO\2.OSGeo\OSGeo_2019\016_PMT_2018
\2.Geoprocessamento Auxiliari\04_Geodatabase\PMTE_2018_BS.gdb\ATD_SONDAS\ATD_UM_MOVEIS_REV04,POSI_NR_LONGITUDE_1,-1,-1;POSI_NR__2
"POSI_NR__2" true true false 8 Double 0 0 ,First,#,\\dragon\bs_gis_sms$\GIS_SMS_RESERVADO\2.OSGeo\OSGeo_2019\016_PMT_2018
\2.Geoprocessamento Auxiliari\04_Geodatabase\PMTE_2018_BS.gdb\ATD_SONDAS\ATD_UM_MOVEIS_REV04,POSI_NR_LATITUDE_1,-1,-1;POSI_NR__3
"POSI_NR__3" true true false 8 Double 0 0 ,First,#,\\dragon\bs_gis_sms$\GIS_SMS_RESERVADO\2.OSGeo\OSGeo_2019\016_PMT_2018
\2.Geoprocessamento Auxiliari\04_Geodatabase\PMTE_2018_BS.gdb\ATD_SONDAS\ATD_UM_MOVEIS_REV04,POSI_NR_VELOCIDADE_1,-1,-1;POSI_NR__4
"POSI_NR__4" true true false 8 Double 0 0 ,First,#,\\dragon\bs_gis_sms$\GIS_SMS_RESERVADO\2.OSGeo\OSGeo_2019\016_PMT_2018
\2.Geoprocessamento Auxiliari\04_Geodatabase\PMTE_2018_BS.gdb\ATD_SONDAS\ATD_UM_MOVEIS_REV04,POSI_NR_RUMO_1,-1,-1;POSI_IN__2
"POSI_IN__2" true true false 2 Short 0 0 ,First,#,\\dragon\bs_gis_sms$\GIS_SMS_RESERVADO\2.OSGeo\OSGeo_2019\016_PMT_2018
\2.Geoprocessamento Auxiliari\04_Geodatabase\PMTE_2018_BS.gdb\ATD_SONDAS\ATD_UM_MOVEIS_REV04,POSI_IN_POSITION_ACCURACY_1,-1,-
1;POSI_CD__2 "POSI_CD__2" true true false 2 Short 0 0 ,First,#,\\dragon\bs_gis_sms$\GIS_SMS_RESERVADO\2.OSGeo\OSGeo_2019
\016_PMT_2018\2.Geoprocessamento Auxiliari\04_Geodatabase\PMTE_2018_BS.gdb\ATD_SONDAS\ATD_UM_MOVEIS_REV04,POSI_CD_MESSAGE_TYPE_1,-1,-
1;POSI_NR__5 "POSI_NR__5" true true false 2 Short 0 0 ,First,#,\\dragon\bs_gis_sms$\GIS_SMS_RESERVADO\2.OSGeo\OSGeo_2019
\016_PMT_2018
\2.Geoprocessamento Auxiliari\04_Geodatabase\PMTE_2018_BS.gdb\ATD_SONDAS\ATD_UM_MOVEIS_REV04,POSI_NR_REPEAT_INDICATOR_1,-1,-
1;PONS_CD__1 "PONS_CD__1" true true false 2 Short 0 0 ,First,#,\\dragon\bs_gis_sms$\GIS_SMS_RESERVADO\2.OSGeo\OSGeo_2019
\016_PMT_2018\2.Geoprocessamento Auxiliari\04_Geodatabase\PMTE_2018_BS.gdb\ATD_SONDAS\ATD_UM_MOVEIS_REV04,PONS_CD_ID_1,-1,-
1;POSI_NR__6 "POSI_NR__6" true true false 2 Short 0 0 ,First,#,\\dragon\bs_gis_sms$\GIS_SMS_RESERVADO\2.OSGeo\OSGeo_2019
\016_PMT_2018\2.Geoprocessamento Auxiliari\04_Geodatabase\PMTE_2018_BS.gdb\ATD_SONDAS\ATD_UM_MOVEIS_REV04,POSI_NR_ROT_1,-1,-
1;POSI_NR__7 "POSI_NR__7" true true false 8 Double 0 0 ,First,#,\\dragon\bs_gis_sms$\GIS_SMS_RESERVADO\2.OSGeo\OSGeo_2019
\016_PMT_2018\2.Geoprocessamento Auxiliari\04_Geodatabase\PMTE_2018_BS.gdb\ATD_SONDAS\ATD_UM_MOVEIS_REV04,POSI_NR_TRUE_HEADING_1,-1,-
1;POSI_DT__1 "POSI_DT__1" true true false 8 Date 0 0 ,First,#,\\dragon\bs_gis_sms$\GIS_SMS_RESERVADO\2.OSGeo\OSGeo_2019\016_PMT_2018
\2.Geoprocessamento Auxiliari\04_Geodatabase\PMTE_2018_BS.gdb\ATD_SONDAS\ATD_UM_MOVEIS_REV04,POSI_DT_DATAHORA_1,-1,-1;POSI_TX__DA
"POSI_TX__DA" true true false 19 Text 0 0 ,First,#,\\dragon\bs_gis_sms$\GIS_SMS_RESERVADO\2.OSGeo\OSGeo_2019\016_PMT_2018
\2.Geoprocessamento Auxiliari\04_Geodatabase\PMTE_2018_BS.gdb\ATD_SONDAS\ATD_UM_MOVEIS_REV04,POSI_TX_DATAHORA,-1,-1;DATA_EMB
"DATA_EMB" true true false 200 Text 0 0 ,First,#,\\dragon\bs_gis_sms$\GIS_SMS_RESERVADO\2.OSGeo\OSGeo_2019\016_PMT_2018
\2.Geoprocessamento Auxiliari\04_Geodatabase\PMTE_2018_BS.gdb\ATD_SONDAS\ATD_UM_MOVEIS_REV04,DATA_EMB,-1,-1;EMB_DT "EMB_DT" true true
false 200 Text 0 0 ,First,#,\\dragon\bs_gis_sms$\GIS_SMS_RESERVADO\2.OSGeo\OSGeo_2019\016_PMT_2018
\2.Geoprocessamento Auxiliari\04_Geodatabase\PMTE_2018_BS.gdb\ATD_SONDAS\ATD_UM_MOVEIS_REV04,EMB_DT,-1,-1;EMB_UM_DT "EMB_UM_DT" true
true false 200 Text 0 0 ,First,#,\\dragon\bs_gis_sms$\GIS_SMS_RESERVADO\2.OSGeo\OSGeo_2019\016_PMT_2018
\2.Geoprocessamento Auxiliari\04_Geodatabase\PMTE_2018_BS.gdb\ATD_SONDAS\ATD_UM_MOVEIS_REV04,EMB_UM_DT,-1,-1;ATENDIMENTO "ATENDIMENTO"
true true false 200 Text 0 0 ,First,#,\\dragon\bs_gis_sms$\GIS_SMS_RESERVADO\2.OSGeo\OSGeo_2019\016_PMT_2018
\2.Geoprocessamento Auxiliari\04_Geodatabase\PMTE_2018_BS.gdb\ATD_SONDAS\ATD_UM_MOVEIS_REV04,ATENDIMENTO,-1,-1" #
INCLUDE IN LINEAGE WHEN EXPORTING METADATA No
```

[Hide Geoprocessing history ▲](#)

Distribution ►

DISTRIBUTION FORMAT

* NAME Shapefile

TRANSFER OPTIONS

* TRANSFER SIZE 0.135

[Hide Distribution ▲](#)

Fields ►

DETAILS FOR OBJECT PETROBRAS_02022_000409_2014_15_BSant_PETROBRAS_2018_08_15_Sondas ►

* TYPE Feature Class

* ROW COUNT 5062

FIELD FID ►

* ALIAS FID

* DATA TYPE OID

* WIDTH 4

* PRECISION 0

* SCALE 0

* FIELD DESCRIPTION
Internal feature number.

* DESCRIPTION SOURCE
Esri

* DESCRIPTION OF VALUES
Sequential unique whole numbers that are automatically generated.

[Hide Field FID ▲](#)

FIELD Shape ►

* ALIAS Shape

* DATA TYPE Geometry

* WIDTH 0

* PRECISION 0

* SCALE 0

* FIELD DESCRIPTION
Feature geometry.

* DESCRIPTION SOURCE
Esri

* DESCRIPTION OF VALUES
Coordinates defining the features.

[Hide Field Shape ▲](#)

FIELD SIGLA_PLAT ►

* ALIAS SIGLA_PLAT

* DATA TYPE String

* WIDTH 50

* PRECISION 0

* SCALE 0

[Hide Field SIGLA_PLAT ▲](#)

FIELD POSI_DT_DA ►
 * ALIAS POSI_DT_DA
 * DATA TYPE Date
 * WIDTH 8
 * PRECISION 0
 * SCALE 0

Hide Field POSI_DT_DA ▲

FIELD TIPO_PLATA ►
 * ALIAS TIPO_PLATA
 * DATA TYPE String
 * WIDTH 70
 * PRECISION 0
 * SCALE 0

Hide Field TIPO_PLATA ▲

FIELD POSI_NR_LO ►
 * ALIAS POSI_NR_LO
 * DATA TYPE Double
 * WIDTH 19
 * PRECISION 0
 * SCALE 0

Hide Field POSI_NR_LO ▲

FIELD POSI_NR_LA ►
 * ALIAS POSI_NR_LA
 * DATA TYPE Double
 * WIDTH 19
 * PRECISION 0
 * SCALE 0

Hide Field POSI_NR_LA ▲

FIELD POSI_NR_VE ►
 * ALIAS POSI_NR_VE
 * DATA TYPE Double
 * WIDTH 19
 * PRECISION 0
 * SCALE 0

Hide Field POSI_NR_VE ▲

FIELD MOVE_TX_NO ►
 * ALIAS MOVE_TX_NO
 * DATA TYPE String
 * WIDTH 50
 * PRECISION 0
 * SCALE 0

Hide Field MOVE_TX_NO ▲

FIELD EMBA_TX_TI ►
 * ALIAS EMBA_TX_TI
 * DATA TYPE String
 * WIDTH 50
 * PRECISION 0
 * SCALE 0

Hide Field EMBA_TX_TI ▲

FIELD EQTI_TX__1 ►
 * ALIAS EQTI_TX__1
 * DATA TYPE String
 * WIDTH 50
 * PRECISION 0
 * SCALE 0

Hide Field EQTI_TX__1 ▲

Hide Details for object PETROBRAS_02022_000409_2014_15_BSant_PETROBRAS_2018_08_15_Sondas ▲

Hide Fields ▲

Metadata Details ►

* METADATA LANGUAGE Portuguese (BRAZIL)
 * METADATA CHARACTER SET utf8 - 8 bit UCS Transfer Format

SCOPE OF THE DATA DESCRIBED BY THE METADATA * dataset
 SCOPE NAME * dataset

* LAST UPDATE 2019-10-30

ARCGIS METADATA PROPERTIES
 METADATA FORMAT ArcGIS 1.0
 METADATA STYLE ISO 19139 Metadata Implementation Specification
 STANDARD OR PROFILE USED TO EDIT METADATA ISO19139

CREATED IN ARCGIS FOR THE ITEM 2019-10-29 14:51:43
 LAST MODIFIED IN ARCGIS FOR THE ITEM 2019-10-30 13:50:18

AUTOMATIC UPDATES

HAVE BEEN PERFORMED Yes
LAST UPDATE 2019-10-30 13:50:18

[Hide Metadata Details ▲](#)

Thumbnail and Enclosures ►

THUMBNAIL
THUMBNAIL TYPE JPG

[Hide Thumbnail and Enclosures ▲](#)

FGDC Metadata (read-only) ▼