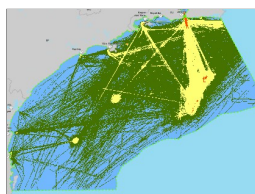


## PETROBRAS\_02022\_000409\_2014\_15\_BSant\_PETROBRAS\_2020\_CLASSES\_DENS\_TOTAL\_BR.tif

Raster Dataset



Tags

DENSIDADE; NAVEGAÇÃO; EMBARCAÇÕES; PETROBRAS; PMTE; BACIA DE SANTOS

### Summary

O Projeto de Monitoramento do Tráfego de Embarcações (PMTE) da Bacia de Santos foi elaborado em atendimento à solicitação da CGPEG/IBAMA, emitida por meio da condicionante específica nº 2.10 da LP nº 0491/2014. A elaboração e o desenvolvimento do PMTE foram baseados nas orientações do parecer técnico PAR 02022.000409/2014-15 CGPEG/IBAMA, de 12 de setembro de 2014, e do parecer técnico PAR 02022.000548/2014-31 CGPEG/IBAMA, 19 de novembro de 2014, bem como nas informações contidas nas respectivas respostas dos pareceres supracitados, encaminhadas pela PETROBRAS ao IBAMA através da carta DE&P 0218/2014, de 13 de outubro de 2014, a qual também encaminhou o projeto atualmente aprovado, e da carta UOBS 0080/2015, de 12 de fevereiro de 2015.

### Description

Raster da Densidade de Navegação das Embarcações PETROBRAS na Bacia de Santos ano de 2019.

### Credits

SUB/SSUB/GDSO/STGO

### Use limitations

There are no access and use limitations for this item.

### Extent

**West** -48.681192 **East** -40.510385  
**North** -22.722517 **South** -27.896450

### Scale Range

**Maximum (zoomed in)** 1:5,000  
**Minimum (zoomed out)** 1:150,000,000

### ArcGIS Metadata ►

#### Topics and Keywords ►

\* CONTENT TYPE Downloadable Data

[Hide Topics and Keywords ▲](#)

#### Citation ►

\* TITLE PETROBRAS\_02022\_000409\_2014\_15\_BSant\_PETROBRAS\_2020\_CLASSES\_DENS\_TOTAL\_BR.tif

PRESENTATION FORMATS \* digital map

[Hide Citation ▲](#)

#### Resource Details ►

DATASET LANGUAGES \* Portuguese (BRAZIL)

SPATIAL REPRESENTATION TYPE \* grid

\* PROCESSING ENVIRONMENT Version 6.2 (Build 9200) ; Esri ArcGIS 10.5.1.7333

#### CREDITS

SUB/SSUB/GDSO/STGO

#### ARCGIS ITEM PROPERTIES

\* NAME PETROBRAS\_02022\_000409\_2014\_15\_BSant\_PETROBRAS\_2020\_CLASSES\_DENS\_TOTAL\_BR.tif

\* LOCATION file:///\\dragon.uo-bs.petrobras.com.br\\bs\_gis\_sms\$\\GIS\_SMS\_RESERVADO\\2.OSGeo\\OSGeo\_2020\\016\_PMTE-

BS\\2.Geoprocessamento\_Auxiliar\\PMTE\_BS\_2019\_BDG\\3\_RASTER\\PETROBRAS\_02022\_000409\_2014\_15\_BSant\_PETROBRAS\_2020\_CLASSES\_DENS\_TOTAL\_B

\* ACCESS PROTOCOL Local Area Network

[Hide Resource Details ▲](#)

#### Extents ►

##### EXTENT

##### GEOGRAPHIC EXTENT

##### BOUNDING RECTANGLE

EXTENT TYPE Extent used for searching

\* WEST LONGITUDE -48.681192

\* EAST LONGITUDE -40.510385

\* NORTH LATITUDE -22.722517

\* SOUTH LATITUDE -27.896450

\* EXTENT CONTAINS THE RESOURCE Yes

##### EXTENT IN THE ITEM'S COORDINATE SYSTEM

\* WEST LONGITUDE 137405.320200

\* EAST LONGITUDE 942405.320200

\* SOUTH LATITUDE 6914268.309900

\* NORTH LATITUDE 7480768.309900

\* EXTENT CONTAINS THE RESOURCE Yes

[Hide Extents ▲](#)

## Spatial Reference ►

### ARCGIS COORDINATE SYSTEM

\* TYPE **Projected**

\* GEOGRAPHIC COORDINATE REFERENCE **GCS\_SIRGAS\_2000**

\* PROJECTION **SIRGAS\_2000\_UTM\_Zone\_23S**

\* COORDINATE REFERENCE DETAILS

PROJECTED COORDINATE SYSTEM

WELL-KNOWN IDENTIFIER **31983**

X ORIGIN **-5120900**

Y ORIGIN **1900**

XY SCALE **450445547.3910538**

Z ORIGIN **-100000**

Z SCALE **10000**

M ORIGIN **-100000**

M SCALE **10000**

XY TOLERANCE **0.001**

Z TOLERANCE **0.001**

M TOLERANCE **0.001**

HIGH PRECISION **true**

LATEST WELL-KNOWN IDENTIFIER **31983**

WELL-KNOWN TEXT **PROJCS["SIRGAS\_2000\_UTM\_Zone\_23S",GEOGCS["GCS\_SIRGAS\_2000",DATUM["D\_SIRGAS\_2000",SPHEROID["GRS\_1980",6378137.0,298.257222101]],PRIMEM["Greenwich",0.0],UNIT["Degree",0.0174532925199433]],PROJECTION["Transverse\_Mercator"],PARAMETER["False\_Easting",500000.0],PARAMETER["False\_Northing",1000000.0],PARAMETER["Central\_Meridian",-45.0],PARAMETER["Scale\_Factor",0.9996],PARAMETER["Latitude\_Of\_Origin",0.0],UNIT["Meter",1.0],AUTHORITY["EPSG",31983]]**

### REFERENCE SYSTEM IDENTIFIER

\* VALUE **31983**

\* CODESPACE **EPSG**

\* VERSION **7.8.3(8.1.2)**

[Hide Spatial Reference ▲](#)

## Spatial Data Properties ►

### GEORECTIFIED GRID ►

\* NUMBER OF DIMENSIONS **2**

#### AXIS DIMENSIONS PROPERTIES

DIMENSION TYPE **column (x-axis)**

\* DIMENSION SIZE **1610**

\* RESOLUTION **500.000000 m (meter)**

#### AXIS DIMENSIONS PROPERTIES

DIMENSION TYPE **row (y-axis)**

\* DIMENSION SIZE **1133**

\* RESOLUTION **500.000000 m (meter)**

\* CELL GEOMETRY **area**

\* POINT IN PIXEL **center**

\* TRANSFORMATION PARAMETERS ARE AVAILABLE **Yes**

\* CHECK POINTS ARE AVAILABLE **No**

#### CORNER POINTS

\* POINT **137405.320200 6914268.309900**

\* POINT **137405.320200 7480768.309900**

\* POINT **942405.320200 7480768.309900**

\* POINT **942405.320200 6914268.309900**

\* CENTER POINT **539905.320200 7197518.309900**

[Hide Georectified Grid ▲](#)

### ARCGIS RASTER PROPERTIES ►

#### GENERAL INFORMATION

\* PIXEL DEPTH **16**

\* COMPRESSION TYPE **LZW**

\* NUMBER OF BANDS **1**

\* RASTER FORMAT **TIFF**

\* SOURCE TYPE **continuous**

\* PIXEL TYPE **unsigned integer**

\* NO DATA VALUE **65535**

\* HAS COLORMAP **No**

\* HAS PYRAMIDS **Yes**

[Hide ArcGIS Raster Properties ▲](#)[Hide Spatial Data Properties ▲](#)

## Spatial Data Content ►

### IMAGE DESCRIPTION

\* TYPE OF INFORMATION **image**

#### BAND INFORMATION

\* DESCRIPTION **Band\_1**

\* MAXIMUM VALUE **6.000000**

\* MINIMUM VALUE **1.000000**

\* NUMBER OF BITS PER VALUE **16**

[Hide Spatial Data Content ▲](#)

## Geoprocessing history ►

### PROCESS

PROCESS NAME

DATE 2020-11-13 14:52:03

TOOL LOCATION c:\program files\arcgis\pro\Resources\ArcToolbox\toolboxes\Spatial Analyst Tools.tbx\Reclassify

#### COMMAND ISSUED

```
Reclassify "Densidade de tráfego - Intervalo de classe" VALUE "0 1;0 36 2;36 365 3;365 3650 4;3650 7300 5;7300 11719 6"
Z:\GIS_SMS_RESERVADO\2.OSGeo\OSGeo_2020\016_PMTE-
BS\2.Geoprocessamento_Auxiliar\PMTE_BS_2019_BDG\3_RASTER\PETROBRAS_02022_000409_2014_15_BSant_PETROBRAS_2020_CLASSES_DENS_TOTAL_BR.tif
```

INCLUDE IN LINEAGE WHEN EXPORTING METADATA No

[Hide Geoprocessing history ▲](#)

## Distribution ►

DISTRIBUTION FORMAT

\* NAME Raster Dataset

[Hide Distribution ▲](#)

## Fields ►

DETAILS FOR OBJECT PETROBRAS\_02022\_000409\_2014\_15\_BSant\_PETROBRAS\_2020\_CLASSES\_DENS\_TOTAL\_BR.tif.vat ►

\* TYPE Table

\* ROW COUNT 6

#### FIELD OID ►

\* ALIAS OID

\* DATA TYPE OID

\* WIDTH 4

\* PRECISION 0

\* SCALE 0

\* FIELD DESCRIPTION

Internal feature number.

\* DESCRIPTION SOURCE

Esri

\* DESCRIPTION OF VALUES

Sequential unique whole numbers that are automatically generated.

[Hide Field OID ▲](#)

#### FIELD Value ►

\* ALIAS Value

\* DATA TYPE Integer

\* WIDTH 10

\* PRECISION 10

\* SCALE 0

\* FIELD DESCRIPTION

VALOR DO PIXEL

\* DESCRIPTION SOURCE

PETROBRAS

[Hide Field Value ▲](#)

#### FIELD Count ►

\* ALIAS Count

\* DATA TYPE Double

\* WIDTH 19

\* PRECISION 0

\* SCALE 0

\* FIELD DESCRIPTION

NÚMERO DO PIXEL NA CLASSE

\* DESCRIPTION SOURCE

PETROBRAS

[Hide Field Count ▲](#)

#### FIELD CLASSES ►

\* ALIAS CLASSES

\* DATA TYPE String

\* WIDTH 50

\* PRECISION 0

\* SCALE 0

\* FIELD DESCRIPTION

CLASSES AGRUPADAS PELO FATIAMENTO DOS DADOS

\* DESCRIPTION SOURCE

PETROBRAS

[Hide Field CLASSES ▲](#)

[Hide Details for object PETROBRAS\\_02022\\_000409\\_2014\\_15\\_BSant\\_PETROBRAS\\_2020\\_CLASSES\\_DENS\\_TOTAL\\_BR.tif.vat ▲](#)

[Hide Fields ▲](#)

## Metadata Details ►

\* METADATA LANGUAGE Portuguese (BRAZIL)

\* METADATA CHARACTER SET utf8 - 8 bit UCS Transfer Format

SCOPE OF THE DATA DESCRIBED BY THE METADATA \* dataset

SCOPE NAME \* dataset

\* LAST UPDATE 2020-11-15

ARCGIS METADATA PROPERTIES

METADATA FORMAT **ArcGIS 1.0**  
 STANDARD OR PROFILE USED TO EDIT METADATA **ISO19139**

CREATED IN ARCGIS FOR THE ITEM **2020-11-13 14:52:03**  
 LAST MODIFIED IN ARCGIS FOR THE ITEM **2020-11-15 22:57:55**

AUTOMATIC UPDATES

HAVE BEEN PERFORMED **Yes**  
 LAST UPDATE **2020-11-15 22:57:55**

[Hide Metadata Details ▲](#)

**Thumbnail and Enclosures ►**

THUMBNAIL

THUMBNAIL TYPE **JPG**

[Hide Thumbnail and Enclosures ▲](#)

**FGDC Metadata (read-only) ▼**