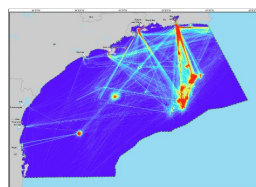


PETROBRAS_02022_000409_2014_15_BSant_PETROBRAS_2020_DENSIDADE_OPERACAO_BR.tif

Raster Dataset



Tags

DENSIDADE; NAVEGAÇÃO; EMBARCAÇÕES; PETROBRAS; OPERAÇÃO; BACIA DE SANTOS

Summary

O Projeto de Monitoramento do Tráfego de Embarcações (PMTE) da Bacia de Santos foi elaborado em atendimento à solicitação da CGPEG/IBAMA, emitida por meio da condicionante específica nº 2.10 da LP nº 0491/2014. A elaboração e o desenvolvimento do PMTE foram baseados nas orientações do parecer técnico PAR 02022.000409/2014-15 CGPEG/IBAMA, de 12 de setembro de 2014, e do parecer técnico PAR 02022.000548/2014-31 CGPEG/IBAMA, 19 de novembro de 2014, bem como nas informações contidas nas respectivas respostas dos pareceres supracitados, encaminhadas pela PETROBRAS ao IBAMA através da carta DE&P 0218/2014, de 13 de outubro de 2014, a qual também encaminhou o projeto atualmente aprovado, e da carta UOBS 0080/2015, de 12 de fevereiro de 2015.

Description

Raster da Densidade de Navegação das Embarcações PETROBRAS na Bacia de Santos para as atividades de operação ano 2019.

Credits

SUB/SSUB/GDSO/STGO

Use limitations

There are no access and use limitations for this item.

Extent

West -48.681192 **East** -40.591373
North -22.724594 **South** -27.896450

Scale Range

Maximum (zoomed in) 1:5,000
Minimum (zoomed out) 1:150,000,000

ArcGIS Metadata ►

Topics and Keywords ►

* CONTENT TYPE Downloadable Data

[Hide Topics and Keywords ▲](#)

Citation ►

* TITLE PETROBRAS_02022_000409_2014_15_BSant_PETROBRAS_2020_DENSIDADE_OPERACAO_BR.tif

PRESENTATION FORMATS * digital map

[Hide Citation ▲](#)

Resource Details ►

DATASET LANGUAGES * Portuguese (BRAZIL)

SPATIAL REPRESENTATION TYPE * grid

* PROCESSING ENVIRONMENT Version 6.2 (Build 9200) ; Esri ArcGIS 10.5.1.7333

CREDITS

SUB/SSUB/GDSO/STGO

ARC GIS ITEM PROPERTIES

* NAME PETROBRAS_02022_000409_2014_15_BSant_PETROBRAS_2020_DENSIDADE_OPERACAO_BR.tif

* LOCATION file:///C:/Users/bafr/AppData/Local/Temp/arc92E2/tmpD275.tmp.htm
 BS\2.Geoprocessamento_Auxiliar\PMTE_BS_2019_BDG\3_RASTER\PETROBRAS_02022_000409_2014_15_BSant_PETROBRAS_2020_DENSIDADE_OPERACAO_F

* ACCESS PROTOCOL Local Area Network

[Hide Resource Details ▲](#)

Extents ►

EXTENT

GEOGRAPHIC EXTENT

BOUNDING RECTANGLE

EXTENT TYPE Extent used for searching

* WEST LONGITUDE -48.681192

* EAST LONGITUDE -40.591373

* NORTH LATITUDE -22.724594

* SOUTH LATITUDE -27.896450

* EXTENT CONTAINS THE RESOURCE Yes

EXTENT IN THE ITEM'S COORDINATE SYSTEM

* WEST LONGITUDE 137405.320200

* EAST LONGITUDE 934405.320200

* SOUTH LATITUDE 6914268.309900

* NORTH LATITUDE 7480768.309900

* EXTENT CONTAINS THE RESOURCE Yes

[Hide Extents ▲](#)

Spatial Reference ►

ARCGIS COORDINATE SYSTEM

* TYPE **Projected**

* GEOGRAPHIC COORDINATE REFERENCE **GCS_SIRGAS_2000**

* PROJECTION **SIRGAS_2000_UTM_Zone_23S**

* COORDINATE REFERENCE DETAILS

PROJECTED COORDINATE SYSTEM

WELL-KNOWN IDENTIFIER **31983**

X ORIGIN **-5120900**

Y ORIGIN **1900**

XY SCALE **450445547.3910538**

Z ORIGIN **-100000**

Z SCALE **10000**

M ORIGIN **-100000**

M SCALE **10000**

XY TOLERANCE **0.001**

Z TOLERANCE **0.001**

M TOLERANCE **0.001**

HIGH PRECISION **true**

LATEST WELL-KNOWN IDENTIFIER **31983**

WELL-KNOWN TEXT **PROJCS["SIRGAS_2000_UTM_Zone_23S",GEOGCS["GCS_SIRGAS_2000",DATUM["D_SIRGAS_2000",SPHEROID["GRS_1980",6378137.0,298.257222101]],PRIMEM["Greenwich",0.0],UNIT["Degree",0.0174532925199433]],PROJECTION["Transverse_Mercator"],PARAMETER["False_Easting",500000.0],PARAMETER["False_Northing",1000000.0],PARAMETER["Central_Meridian",-45.0],PARAMETER["Scale_Factor",0.9996],PARAMETER["Latitude_Of_Origin",0.0],UNIT["Meter",1.0],AUTHORITY["EPSG",31983]]**

REFERENCE SYSTEM IDENTIFIER

* VALUE **31983**

* CODESPACE **EPSG**

* VERSION **7.8.3(8.1.2)**

[Hide Spatial Reference ▲](#)

Spatial Data Properties ►

GEORECTIFIED GRID ►

* NUMBER OF DIMENSIONS **2**

AXIS DIMENSIONS PROPERTIES

DIMENSION TYPE **column (x-axis)**

* DIMENSION SIZE **1594**

* RESOLUTION **500.000000 m (meter)**

AXIS DIMENSIONS PROPERTIES

DIMENSION TYPE **row (y-axis)**

* DIMENSION SIZE **1133**

* RESOLUTION **500.000000 m (meter)**

* CELL GEOMETRY **area**

* POINT IN PIXEL **center**

* TRANSFORMATION PARAMETERS ARE AVAILABLE **Yes**

* CHECK POINTS ARE AVAILABLE **No**

CORNER POINTS

* POINT **137405.320200 6914268.309900**

* POINT **137405.320200 7480768.309900**

* POINT **934405.320200 7480768.309900**

* POINT **934405.320200 6914268.309900**

* CENTER POINT **535905.320200 7197518.309900**

[Hide Georectified Grid ▲](#)

ARCGIS RASTER PROPERTIES ►

GENERAL INFORMATION

* PIXEL DEPTH **32**

* COMPRESSION TYPE **LZW**

* NUMBER OF BANDS **1**

* RASTER FORMAT **TIFF**

* SOURCE TYPE **continuous**

* PIXEL TYPE **floating point**

* NO DATA VALUE **3.4e+038**

* HAS COLORMAP **No**

* HAS PYRAMIDS **Yes**

[Hide ArcGIS Raster Properties ▲](#)[Hide Spatial Data Properties ▲](#)

Spatial Data Content ►

IMAGE DESCRIPTION

* TYPE OF INFORMATION **image**

BAND INFORMATION

* DESCRIPTION **Band_1**

* MAXIMUM VALUE **8375.512695**

* MINIMUM VALUE **0.000000**

* NUMBER OF BITS PER VALUE **32**

[Hide Spatial Data Content ▲](#)

Geoprocessing history ►

PROCESS

PROCESS NAME

DATE 2020-06-17 17:23:36

TOOL LOCATION c:\program files\arcgis\pro\Resources\ArcToolbox\toolboxes\Spatial Analyst Tools.tbx\LineDensity

COMMAND ISSUED

LineDensity Lin_NAV_BR_OPERACAO_BS_2019_UTMSirgas_merge_gerencias NONE Z:\GIS_SMS_RESERVADO\2.OSGeo\OSGeo_2020\016_PMTE-BS\2.Geoprocessamento_Auxiliar\02_Projetos_APRX\OS016_PMTE_BS\OS016_PMTE_BS.gdb\Rst_DENS_NAV_BR_OPERACAO_2019_BS_UTMSirgas23S 500 353,553 "Square kilometers"

INCLUDE IN LINEAGE WHEN EXPORTING METADATA No

PROCESS

PROCESS NAME

DATE 2020-11-13 09:01:06

TOOL LOCATION c:\program files\arcgis\pro\Resources\ArcToolbox\toolboxes\Data Management Tools.tbx\Clip

COMMAND ISSUED

Clip Rst_DENS_NAV_BR_OPERACAO_2019_BS_UTMSirgas23S "132748,6451 6913938,6924 948217,4108 7490726,6" Z:\GIS_SMS_RESERVADO\2.OSGeo\OSGeo_2020\016_PMTE-BS\2.Geoprocessamento_Auxiliar\PMTE_BS_2019_BDG\3_RASTER\PETROBRAS_02022_000409_2014_15_BSant_PETROBRAS_2020_DENSIDADE_OPERACAO_BR.ti "Limites Bacia de Santos" 3,4e+38 NONE NO_MAINTAIN_EXTENT

INCLUDE IN LINEAGE WHEN EXPORTING METADATA No

[Hide Geoprocessing history ▲](#)

Distribution ►

DISTRIBUTION FORMAT

* NAME Raster Dataset

[Hide Distribution ▲](#)

Metadata Details ►

* METADATA LANGUAGE Portuguese (BRAZIL)

SCOPE OF THE DATA DESCRIBED BY THE METADATA * dataset

SCOPE NAME * dataset

* LAST UPDATE 2020-11-15

ARCGIS METADATA PROPERTIES

METADATA FORMAT ArcGIS 1.0

STANDARD OR PROFILE USED TO EDIT METADATA ISO19139

CREATED IN ARCGIS FOR THE ITEM 2020-06-17 17:23:35

LAST MODIFIED IN ARCGIS FOR THE ITEM 2020-11-15 22:59:24

AUTOMATIC UPDATES

HAVE BEEN PERFORMED Yes

LAST UPDATE 2020-11-15 22:59:24

[Hide Metadata Details ▲](#)

Thumbnail and Enclosures ►

THUMBNAIL

THUMBNAIL TYPE JPG

[Hide Thumbnail and Enclosures ▲](#)