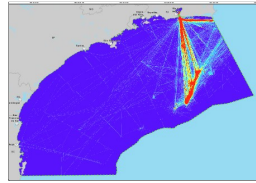


PETROBRAS_02022_000409_2014_15_BSant_PETROBRAS_2020_DENSIDADE_INSTALACAO_BR.tif

Raster Dataset



Tags

DENSIDADE; NAVEGAÇÃO; EMBARCAÇÕES; PETROBRAS; INSTALAÇÃO; BACIA DE SANTOS

Summary

O Projeto de Monitoramento do Tráfego de Embarcações (PMTE) da Bacia de Santos foi elaborado em atendimento à solicitação da CGPEG/IBAMA, emitida por meio da condicionante específica nº 2.10 da LP nº 0491/2014. A elaboração e o desenvolvimento do PMTE foram baseados nas orientações do parecer técnico PAR 02022.000409/2014-15 CGPEG/IBAMA, de 12 de setembro de 2014, e do parecer técnico PAR 02022.000548/2014-31 CGPEG/IBAMA, 19 de novembro de 2014, bem como nas informações contidas nas respectivas respostas dos pareceres supracitados, encaminhadas pela PETROBRAS ao IBAMA através da carta DE&P 0218/2014, de 13 de outubro de 2014, a qual também encaminhou o projeto atualmente aprovado, e da carta UOBS 0080/2015, de 12 de fevereiro de 2015.

Description

Raster da Densidade de Navegação das Embarcações PETROBRAS na Bacia de Santos para as atividades de instalação ano 2019.

Credits

SUB/SSUB/GDSO/STGO

Use limitations

There are no access and use limitations for this item.

Extent

West -48.670970 **East** -40.972529
North -22.749064 **South** -27.875585

Scale Range

Maximum (zoomed in) 1:5,000
Minimum (zoomed out) 1:150,000,000

ArcGIS Metadata ►

Topics and Keywords ►

* CONTENT TYPE Downloadable Data

[Hide Topics and Keywords ▲](#)

Citation ►

* TITLE PETROBRAS_02022_000409_2014_15_BSant_PETROBRAS_2020_DENSIDADE_INSTALACAO_BR.tif

PRESENTATION FORMATS * digital map

[Hide Citation ▲](#)

Resource Details ►

DATASET LANGUAGES * Portuguese (BRAZIL)

SPATIAL REPRESENTATION TYPE * grid

* PROCESSING ENVIRONMENT Version 6.2 (Build 9200) ; Esri ArcGIS 10.5.1.7333

CREDITS

SUB/SSUB/GDSO/STGO

ARC GIS ITEM PROPERTIES

* NAME PETROBRAS_02022_000409_2014_15_BSant_PETROBRAS_2020_DENSIDADE_INSTALACAO_BR.tif

* LOCATION file:///C:/Users/bafr/AppData/Local/Temp/arc92E2/tmp92F9.tmp.htm

BS\2.Geoprocessamento_Auxiliar\PMTE_BS_2019_BDG\3_RASTER\PETROBRAS_02022_000409_2014_15_BSant_PETROBRAS_2020_DENSIDADE_INSTALACAO

* ACCESS PROTOCOL Local Area Network

[Hide Resource Details ▲](#)

Extents ►

EXTENT

GEOGRAPHIC EXTENT

BOUNDING RECTANGLE

EXTENT TYPE Extent used for searching

* WEST LONGITUDE -48.670970

* EAST LONGITUDE -40.972529

* NORTH LATITUDE -22.749064

* SOUTH LATITUDE -27.875585

* EXTENT CONTAINS THE RESOURCE Yes

EXTENT IN THE ITEM'S COORDINATE SYSTEM

* WEST LONGITUDE 138344.637900

* EAST LONGITUDE 896844.637900

* SOUTH LATITUDE 6916579.545800

* NORTH LATITUDE 7479079.545800

* EXTENT CONTAINS THE RESOURCE Yes

[Hide Extents ▲](#)

Spatial Reference ►

ARCGIS COORDINATE SYSTEM

* TYPE **Projected**
 * GEOGRAPHIC COORDINATE REFERENCE GCS_SIRGAS_2000
 * PROJECTION SIRGAS_2000_UTM_Zone_23S
 * COORDINATE REFERENCE DETAILS
 PROJECTED COORDINATE SYSTEM
 WELL-KNOWN IDENTIFIER 31983
 X ORIGIN -5120900
 Y ORIGIN 1900
 XY SCALE 450445547.3910538
 Z ORIGIN -100000
 Z SCALE 10000
 M ORIGIN -100000
 M SCALE 10000
 XY TOLERANCE 0.001
 Z TOLERANCE 0.001
 M TOLERANCE 0.001
 HIGH PRECISION true
 LATEST WELL-KNOWN IDENTIFIER 31983
 WELL-KNOWN TEXT PROJCS["SIRGAS_2000_UTM_Zone_23S",GEOGCS["GCS_SIRGAS_2000",DATUM["D_SIRGAS_2000",SPHEROID["GRS_1980",6378137.0,298.257222101]],PRIMEM["Greenwich",0.0],UNIT["Degree",0.0174532925199433]],PROJECTION["Transverse_Mercator"],PARAMETER["False_Easting",500000.0],PARAMETER["False_Northing",1000000.0],PARAMETER["Central_Meridian",-45.0],PARAMETER["Scale_Factor",0.9996],PARAMETER["Latitude_Of_Origin",0.0],UNIT["Meter",1.0],AUTHORITY["EPSG",31983]]

REFERENCE SYSTEM IDENTIFIER

* VALUE 31983
 * CODESPACE EPSG
 * VERSION 7.8.3(8.1.2)

[Hide Spatial Reference ▲](#)

Spatial Data Properties ►

GEORECTIFIED GRID ►

* NUMBER OF DIMENSIONS 2

AXIS DIMENSIONS PROPERTIES

DIMENSION TYPE column (x-axis)
 * DIMENSION SIZE 1517
 * RESOLUTION 500.000000 m (meter)

AXIS DIMENSIONS PROPERTIES

DIMENSION TYPE row (y-axis)
 * DIMENSION SIZE 1125
 * RESOLUTION 500.000000 m (meter)

* CELL GEOMETRY area
 * POINT IN PIXEL center

* TRANSFORMATION PARAMETERS ARE AVAILABLE Yes

* CHECK POINTS ARE AVAILABLE No

CORNER POINTS

* POINT 138344.637900 6916579.545800
 * POINT 138344.637900 7479079.545800
 * POINT 896844.637900 7479079.545800
 * POINT 896844.637900 6916579.545800

* CENTER POINT 517594.637900 7197829.545800

[Hide Georectified Grid ▲](#)

ARCGIS RASTER PROPERTIES ►

GENERAL INFORMATION

* PIXEL DEPTH 32
 * COMPRESSION TYPE LZW
 * NUMBER OF BANDS 1
 * RASTER FORMAT TIFF
 * SOURCE TYPE continuous
 * PIXEL TYPE floating point
 * NO DATA VALUE 3.4e+038
 * HAS COLORMAP No
 * HAS PYRAMIDS Yes

[Hide ArcGIS Raster Properties ▲](#)

[Hide Spatial Data Properties ▲](#)

Spatial Data Content ►

IMAGE DESCRIPTION

* TYPE OF INFORMATION image

BAND INFORMATION

* DESCRIPTION Band_1
 * MAXIMUM VALUE 3155.855225
 * MINIMUM VALUE 0.000000
 * NUMBER OF BITS PER VALUE 32

[Hide Spatial Data Content ▲](#)

Geoprocessing history ►

PROCESS

PROCESS NAME
 DATE 2020-06-17 17:16:00
 TOOL LOCATION c:\program files\arcgis\pro\Resources\ArcToolbox\toolboxes\Spatial Analyst Tools.tbx\LineDensity
 COMMAND ISSUED
 LineDensity Lin_NAV_BR_INSTALACAO_BS_2019_UTMSirgas_merge_gerencias NONE Z:\GIS_SMS_RESERVADO\2.OSGeo\OSGeo_2020\016_PMTE-
 BS\2.Geoprocessamento_Auxiliar\02_Projetos_APRX\OS016_PMTE_BS\OS016_PMTE_BS.gdb\Rst_DENS_NAV_BR_INSTALACAO_2019_BS_UTMSirgas23S 500
 353,553 "Square kilometers"
 INCLUDE IN LINEAGE WHEN EXPORTING METADATA No

PROCESS

PROCESS NAME
 DATE 2020-11-13 09:29:10
 TOOL LOCATION c:\program files\arcgis\pro\Resources\ArcToolbox\toolboxes\Data Management Tools.tbx\Clip
 COMMAND ISSUED
 Clip Rst_DENS_NAV_BR_INSTALACAO_2019_BS_UTMSirgas23S "132748,6451 6913938,6924 948217,4108 7490726,6"
 Z:\GIS_SMS_RESERVADO\2.OSGeo\OSGeo_2020\016_PMTE-
 BS\2.Geoprocessamento_Auxiliar\PMTE_BS_2019_BDG\3_RASTER\PETROBRAS_02022_000409_2014_15_BSant_PETROBRAS_2020_DENSIDADE_INSTALACAO_BR.
 "Limites Bacia de Santos" 3,4e+38 NONE NO_MAINTAIN_EXTENT
 INCLUDE IN LINEAGE WHEN EXPORTING METADATA No

[Hide Geoprocessing history ▲](#)

Distribution ►

DISTRIBUTION FORMAT
 * NAME Raster Dataset

[Hide Distribution ▲](#)

Metadata Details ►

* METADATA LANGUAGE Portuguese (BRAZIL)

SCOPE OF THE DATA DESCRIBED BY THE METADATA * dataset
 SCOPE NAME * dataset

* LAST UPDATE 2020-11-15

ARCGIS METADATA PROPERTIES

METADATA FORMAT ArcGIS 1.0
 STANDARD OR PROFILE USED TO EDIT METADATA ISO19139

CREATED IN ARCGIS FOR THE ITEM 2020-06-17 17:16:00
 LAST MODIFIED IN ARCGIS FOR THE ITEM 2020-11-15 22:59:08

AUTOMATIC UPDATES

HAVE BEEN PERFORMED Yes
 LAST UPDATE 2020-11-15 22:59:08

[Hide Metadata Details ▲](#)

Thumbnail and Enclosures ►

THUMBNAIL
 THUMBNAIL TYPE JPG

[Hide Thumbnail and Enclosures ▲](#)